



SERIE350

Filtri oleodinamici, alta pressione, a 90°, in alluminio anodizzato e INOX, portata massima 100 l/min, pressione massima 350bar

Serie: 350 a 90°

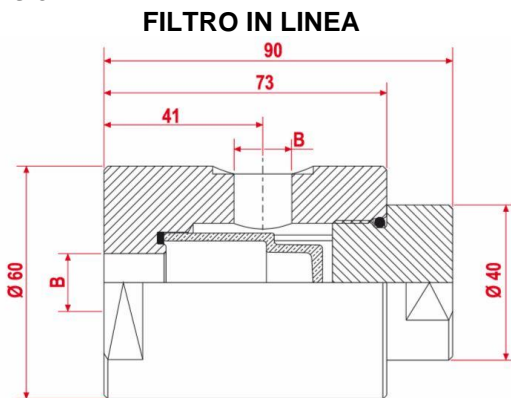
Linea prodotto: Settori Agricolo e Forestale, Movimento Terra, Automotive, Industriale, Marino, Eolico, Trasporto

- Funzionamento in linea a 90° (attacco laterale su corpo filtro)
- Compatti e leggeri
- Massima robustezza ed efficienza
- Elevate prestazioni di filtraggio e resistenza
- Componenti del filtro intercambiabili
- Cartuccia filtrante, sostituibile o lavabile, in bronzo sinterizzato
- Reversibilità del filtro per garantire un filtraggio in entrambe le direzioni del flusso
- Facilità di installazione
- Tappo di ispezione della cartuccia filtrante per una manutenzione ancora più rapida ed immediata

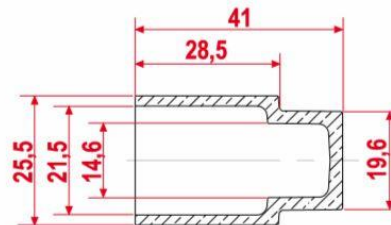
Specifiche tecniche:

Pressione massima d'esercizio (bar):	350
Portata massima nominale (l/min):	100
Grado di filtraggio (µm):	10-25-40-60-80/100
Materiale corpo filtro:	Alluminio anodizzato / INOX AISI 316L
Materiale cartuccia filtrante:	Bronzo sinterizzato
Materiale guarnizioni:	NBR / VITON
Connessione:	BSP / NPTF
Filettatura attacchi:	M18/10 - M18/25 - 9/16UNF - 1/2" - 1/4" - 3/8"
Peso (kg):	0,24 (alluminio) / 0,60 (inox)

Dimensioni:



ELEMENTO FILTRANTE INTERNO





Via F. De Pisis, 5 - 42124 Reggio Emilia (Italy)
 Tel. +39 0522 505 911 - Fax +39 0522 514 204
 E-mail: bell@bell.it - Web-Site: www.bell.it - PEC: bell@pec.bell.it

Per ordinare:

P/N	DESCRIPTION	THREAD	FILTERING	BODY	FLOW	TYPE
924901410	T 14/10	1 / 4" BSP	10 µ	ALU	→	NBR 70SH
924901425	T 14/25	1 / 4" BSP	25 µ	ALU	→	NBR 70SH
924901440	T 14/40	1 / 4" BSP	40 µ	ALU	→	NBR 70SH
924901460	T 14/60	1 / 4" BSP	60 µ	ALU	→	NBR 70SH
924901480	T 14/80	1 / 4" BSP	80 µ	ALU	→	NBR 70SH
924903810	T 38/10	3 / 8" BSP	10 µ	ALU	→	NBR 70SH
924903825	T 38/25	3 / 8" BSP	25 µ	ALU	→	NBR 70SH
924903840	T 38/40	3 / 8" BSP	40 µ	ALU	→	NBR 70SH
924903860	T 38/60	3 / 8" BSP	60 µ	ALU	→	NBR 70SH
924903880	T 38/80	3 / 8" BSP	80 µ	ALU	→	NBR 70SH
924901810	T 18/10	M18X1,5	10 µ	ALU	→	NBR 70SH
924901825	T 18/25	M18X1,5	25 µ	ALU	→	NBR 70SH
924901840	T 18/40	M18X1,5	40 µ	ALU	→	NBR 70SH
924901860	T 18/60	M18X1,5	60 µ	ALU	→	NBR 70SH
924901880	T 18/80	M18X1,5	80 µ	ALU	→	NBR 70SH
924901413	T 14/10	1 / 4" BSP	10 µ	ALU	→	VITON
924901427	T 14/25	1 / 4" BSP	25 µ	ALU	→	VITON
924901442	T 14/40	1 / 4" BSP	40 µ	ALU	→	VITON
924901462	T 14/60	1 / 4" BSP	60 µ	ALU	→	VITON
924901482	T 14/80	1 / 4" BSP	80 µ	ALU	→	VITON
924903812	T 38/10	3 / 8" BSP	10 µ	ALU	→	VITON
924903827	T 38/25	3 / 8" BSP	25 µ	ALU	→	VITON
924903842	T 38/40	3 / 8" BSP	40 µ	ALU	→	VITON
924903862	T 38/60	3 / 8" BSP	60 µ	ALU	→	VITON
924903882	T 38/80	3 / 8" BSP	80 µ	ALU	→	VITON
924901812	T 18/10	M18X1,5	10 µ	ALU	→	VITON
924901827	T 18/25	M18X1,5	25 µ	ALU	→	VITON
924901842	T 18/40	M18X1,5	40 µ	ALU	→	VITON
924901862	T 18/60	M18X1,5	60 µ	ALU	→	VITON
924901882	T 18/80	M18X1,5	80 µ	ALU	→	VITON
924901411	T-R 14/10	1 / 4" BSP	10 µ	ALU	↔	NBR 70SH
924901426	T-R 14/25	1 / 4" BSP	25 µ	ALU	↔	NBR 70SH
924901441	T-R 14/40	1 / 4" BSP	40 µ	ALU	↔	NBR 70SH
924901461	T-R 14/60	1 / 4" BSP	60 µ	ALU	↔	NBR 70SH
924901481	T-R 14/80	1 / 4" BSP	80 µ	ALU	↔	NBR 70SH
924903811	T-R 38/10	3 / 8" BSP	10 µ	ALU	↔	NBR 70SH
924903826	T-R 38/25	3 / 8" BSP	25 µ	ALU	↔	NBR 70SH
924903841	T-R 38/40	3 / 8" BSP	40 µ	ALU	↔	NBR 70SH
924903861	T-R 38/60	3 / 8" BSP	60 µ	ALU	↔	NBR 70SH
924903881	T-R 38/80	3 / 8" BSP	80 µ	ALU	↔	NBR 70SH
924901811	T-R 18/10	M18X1,5	10 µ	ALU	↔	NBR 70SH
924901826	T-R 18/25	M18X1,5	25 µ	ALU	↔	NBR 70SH
924901841	T-R 18/40	M18X1,5	40 µ	ALU	↔	NBR 70SH
924901861	T-R 18/60	M18X1,5	60 µ	ALU	↔	NBR 70SH
924901881	T-R 18/80	M18X1,5	80 µ	ALU	↔	NBR 70SH
924901413	T-R 14/10	1 / 4" BSP	10 µ	ALU	↔	VITON
924901429	T-R 14/25	1 / 4" BSP	25 µ	ALU	↔	VITON
924901443	T-R 14/40	1 / 4" BSP	40 µ	ALU	↔	VITON
924901463	T-R 14/60	1 / 4" BSP	60 µ	ALU	↔	VITON
924901483	T-R 14/80	1 / 4" BSP	80 µ	ALU	↔	VITON
924903813	T-R 38/10	3 / 8" BSP	10 µ	ALU	↔	VITON
924903829	T-R 38/25	3 / 8" BSP	25 µ	ALU	↔	VITON
924903843	T-R 38/40	3 / 8" BSP	40 µ	ALU	↔	VITON
924903863	T-R 38/60	3 / 8" BSP	60 µ	ALU	↔	VITON
924903883	T-R 38/80	3 / 8" BSP	80 µ	ALU	↔	VITON
924901813	T-R 18/10	M18X1,5	10 µ	ALU	↔	VITON
924901829	T-R 18/25	M18X1,5	25 µ	ALU	↔	VITON
924901843	T-R 18/40	M18X1,5	40 µ	ALU	↔	VITON
924901863	T-R 18/60	M18X1,5	60 µ	ALU	↔	VITON
924901883	T-R 18/80	M18X1,5	80 µ	ALU	↔	VITON



Via F. De Pisis, 5 - 42124 Reggio Emilia (Italy)
 Tel. +39 0522 505 911 - Fax +39 0522 514 204
 E-mail: bell@bell.it - Web-Site: www.bell.it - PEC: bell@pec.bell.it

P/N	DESCRIPTION	THREAD	FILTERING	BODY	FLOW	TYPE
924901416	T 14/10	1 / 4" BSP	10 µ	ALU	→	NBR 90SH
924901431	T 14/25	1 / 4" BSP	25 µ	ALU	→	NBR 90SH
924901446	T 14/40	1 / 4" BSP	40 µ	ALU	→	NBR 90SH
924901466	T 14/60	1 / 4" BSP	60 µ	ALU	→	NBR 90SH
924901486	T 14/80	1 / 4" BSP	80 µ	ALU	→	NBR 90SH
924903816	T 38/10	3 / 8" BSP	10 µ	ALU	→	NBR 90SH
924903831	T 38/25	3 / 8" BSP	25 µ	ALU	→	NBR 90SH
924903846	T 38/40	3 / 8" BSP	40 µ	ALU	→	NBR 90SH
924903866	T 38/60	3 / 8" BSP	60 µ	ALU	→	NBR 90SH
924903886	T 38/80	3 / 8" BSP	80 µ	ALU	→	NBR 90SH
924901816	T 18/10	M18X1,5	10 µ	ALU	→	NBR 90SH
924901831	T 18/25	M18X1,5	25 µ	ALU	→	NBR 90SH
924901846	T 18/40	M18X1,5	40 µ	ALU	→	NBR 90SH
924901866	T 18/60	M18X1,5	60 µ	ALU	→	NBR 90SH
924901886	T 18/80	M18X1,5	80 µ	ALU	→	NBR 90SH
924901417	T-R 14/10	1 / 4" BSP	10 µ	ALU	↔	NBR 90SH
924901432	T-R 14/25	1 / 4" BSP	25 µ	ALU	↔	NBR 90SH
924901447	T-R 14/40	1 / 4" BSP	40 µ	ALU	↔	NBR 90SH
924901467	T-R 14/60	1 / 4" BSP	60 µ	ALU	↔	NBR 90SH
924901487	T-R 14/80	1 / 4" BSP	80 µ	ALU	↔	NBR 90SH
924903817	T-R 38/10	3 / 8" BSP	10 µ	ALU	↔	NBR 90SH
924903832	T-R 38/25	3 / 8" BSP	25 µ	ALU	↔	NBR 90SH
924903847	T-R 38/40	3 / 8" BSP	40 µ	ALU	↔	NBR 90SH
924903867	T-R 38/60	3 / 8" BSP	60 µ	ALU	↔	NBR 90SH
924903887	T-R 38/80	3 / 8" BSP	80 µ	ALU	↔	NBR 90SH
924901817	T-R 18/10	M18X1,5	10 µ	ALU	↔	NBR 90SH
924901832	T-R 18/25	M18X1,5	25 µ	ALU	↔	NBR 90SH
924901847	T-R 18/40	M18X1,5	40 µ	ALU	↔	NBR 90SH
924901867	T-R 18/60	M18X1,5	60 µ	ALU	↔	NBR 90SH
924901887	T-R 18/80	M18X1,5	80 µ	ALU	↔	NBR 90SH
924911410	T 14/10	1 / 4" BSP	10 µ	INOX 316L	→	NBR 70SH
924911425	T 14/25	1 / 4" BSP	25 µ	INOX 316L	→	NBR 70SH
924911440	T 14/40	1 / 4" BSP	40 µ	INOX 316L	→	NBR 70SH
924911460	T 14/60	1 / 4" BSP	60 µ	INOX 316L	→	NBR 70SH
924911480	T 14/80	1 / 4" BSP	80 µ	INOX 316L	→	NBR 70SH
924913810	T 38/10	3 / 8" BSP	10 µ	INOX 316L	→	NBR 70SH
924913825	T 38/25	3 / 8" BSP	25 µ	INOX 316L	→	NBR 70SH
924913840	T 38/40	3 / 8" BSP	40 µ	INOX 316L	→	NBR 70SH
924913860	T 38/60	3 / 8" BSP	60 µ	INOX 316L	→	NBR 70SH
924913880	T 38/80	3 / 8" BSP	80 µ	INOX 316L	→	NBR 70SH
924911810	T 18/10	M18X1,5	10 µ	INOX 316L	→	NBR 70SH
924911825	T 18/25	M18X1,5	25 µ	INOX 316L	→	NBR 70SH
924911840	T 18/40	M18X1,5	40 µ	INOX 316L	→	NBR 70SH
924911860	T 18/60	M18X1,5	60 µ	INOX 316L	→	NBR 70SH
924911880	T 18/80	M18X1,5	80 µ	INOX 316L	→	NBR 70SH
924911411	T-R 14/10	1 / 4" BSP	10 µ	INOX 316L	↔	NBR 70SH
924911426	T-R 14/25	1 / 4" BSP	25 µ	INOX 316L	↔	NBR 70SH
924911441	T-R 14/40	1 / 4" BSP	40 µ	INOX 316L	↔	NBR 70SH
924911461	T-R 14/60	1 / 4" BSP	60 µ	INOX 316L	↔	NBR 70SH
924911481	T-R 14/80	1 / 4" BSP	80 µ	INOX 316L	↔	NBR 70SH
924913811	T-R 38/10	3 / 8" BSP	10 µ	INOX 316L	↔	NBR 70SH
924913826	T-R 38/25	3 / 8" BSP	25 µ	INOX 316L	↔	NBR 70SH
924913841	T-R 38/40	3 / 8" BSP	40 µ	INOX 316L	↔	NBR 70SH
924913861	T-R 38/60	3 / 8" BSP	60 µ	INOX 316L	↔	NBR 70SH
924913881	T-R 38/80	3 / 8" BSP	80 µ	INOX 316L	↔	NBR 70SH
924911811	T-R 18/10	M18X1,5	10 µ	INOX 316L	↔	NBR 70SH
924911826	T-R 18/25	M18X1,5	25 µ	INOX 316L	↔	NBR 70SH
924911841	T-R 18/40	M18X1,5	40 µ	INOX 316L	↔	NBR 70SH
924911861	T-R 18/60	M18X1,5	60 µ	INOX 316L	↔	NBR 70SH
924911881	T-R 18/80	M18X1,5	80 µ	INOX 316L	↔	NBR 70SH
924911412	T 14/10	1 / 4" BSP	10 µ	INOX 316L	→	VITON
924911427	T 14/25	1 / 4" BSP	25 µ	INOX 316L	→	VITON

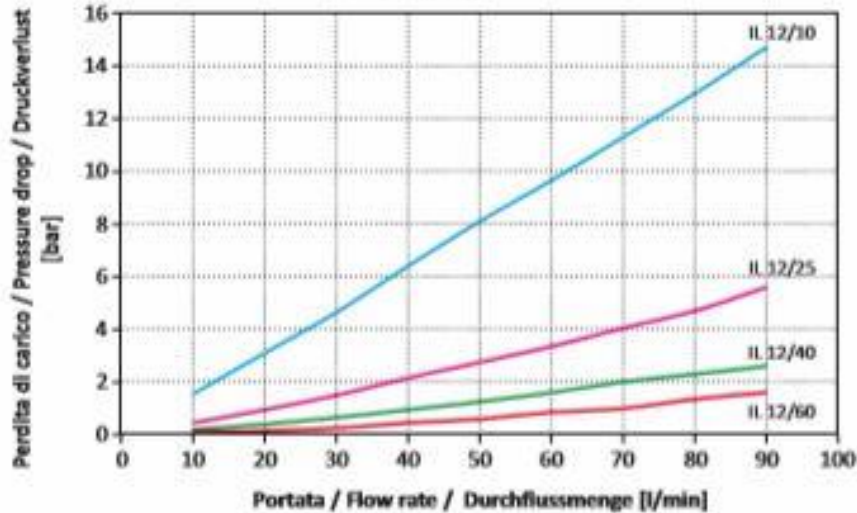


Via F. De Pisis, 5 - 42124 Reggio Emilia (Italy)
 Tel. +39 0522 505 911 - Fax +39 0522 514 204
 E-mail: bell@bell.it - Web-Site: www.bell.it - PEC: bell@pec.bell.it

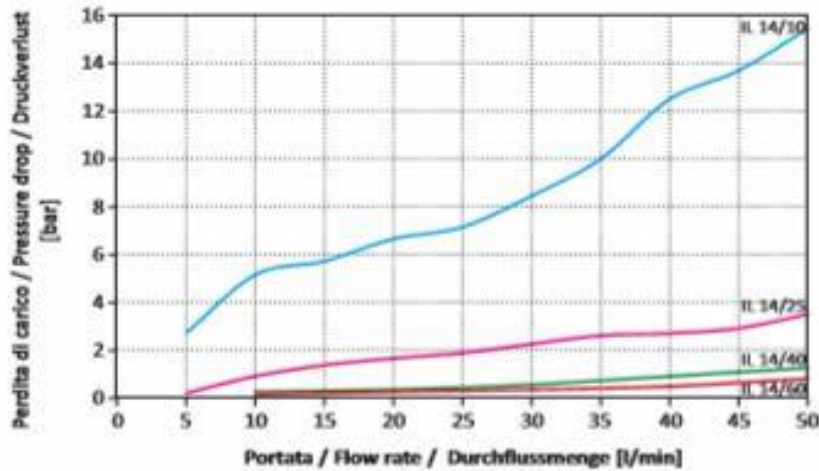
P/N	DESCRIPTION	THREAD	FILTERING	BODY	FLOW	TYPE
924911442	T 14/40	1 / 4" BSP	40 µ	INOX 316L	→	VITON
924911462	T 14/60	1 / 4" BSP	60 µ	INOX 316L	→	VITON
924911482	T 14/80	1 / 4" BSP	80 µ	INOX 316L	→	VITON
924913812	T 38/10	3 / 8" BSP	10 µ	INOX 316L	→	VITON
924913827	T 38/25	3 / 8" BSP	25 µ	INOX 316L	→	VITON
924913842	T 38/40	3 / 8" BSP	40 µ	INOX 316L	→	VITON
924913862	T 38/60	3 / 8" BSP	60 µ	INOX 316L	→	VITON
924913882	T 38/80	3 / 8" BSP	80 µ	INOX 316L	→	VITON
924911812	T 18/10	M18X1,5	10 µ	INOX 316L	→	VITON
924911827	T 18/25	M18X1,5	25 µ	INOX 316L	→	VITON
924911842	T 18/40	M18X1,5	40 µ	INOX 316L	→	VITON
924911862	T 18/60	M18X1,5	60 µ	INOX 316L	→	VITON
924911882	T 18/80	M18X1,5	80 µ	INOX 316L	→	VITON
924911413	T-R 14/10	1 / 4" BSP	10 µ	INOX 316L	↔	VITON
924911429	T-R 14/25	1 / 4" BSP	25 µ	INOX 316L	↔	VITON
924911443	T-R 14/40	1 / 4" BSP	40 µ	INOX 316L	↔	VITON
924911463	T-R 14/60	1 / 4" BSP	60 µ	INOX 316L	↔	VITON
924911483	T-R 14/80	1 / 4" BSP	80 µ	INOX 316L	↔	VITON
924913813	T-R 38/10	3 / 8" BSP	10 µ	INOX 316L	↔	VITON
924913829	T-R 38/25	3 / 8" BSP	25 µ	INOX 316L	↔	VITON
924913843	T-R 38/40	3 / 8" BSP	40 µ	INOX 316L	↔	VITON
924913863	T-R 38/60	3 / 8" BSP	60 µ	INOX 316L	↔	VITON
924913883	T-R 38/80	3 / 8" BSP	80 µ	INOX 316L	↔	VITON
924911813	T-R 18/10	M18X1,5	10 µ	INOX 316L	↔	VITON
924911829	T-R 18/25	M18X1,5	25 µ	INOX 316L	↔	VITON
924911843	T-R 18/40	M18X1,5	40 µ	INOX 316L	↔	VITON
924911863	T-R 18/60	M18X1,5	60 µ	INOX 316L	↔	VITON
924911883	T-R 18/80	M18X1,5	80 µ	INOX 316L	↔	VITON
924901410	T 14/10	1 / 4" BSP	10 µ	ALU	→	NBR 70SH
924901425	T 14/25	1 / 4" BSP	25 µ	ALU	→	NBR 70SH
924901440	T 14/40	1 / 4" BSP	40 µ	ALU	→	NBR 70SH
924901460	T 14/60	1 / 4" BSP	60 µ	ALU	→	NBR 70SH
924901480	T 14/80	1 / 4" BSP	80 µ	ALU	→	NBR 70SH
924903810	T 38/10	3 / 8" BSP	10 µ	ALU	→	NBR 70SH
924903825	T 38/25	3 / 8" BSP	25 µ	ALU	→	NBR 70SH
924903840	T 38/40	3 / 8" BSP	40 µ	ALU	→	NBR 70SH
924903860	T 38/60	3 / 8" BSP	60 µ	ALU	→	NBR 70SH
924903880	T 38/80	3 / 8" BSP	80 µ	ALU	→	NBR 70SH
924901810	T 18/10	M18X1,5	10 µ	ALU	→	NBR 70SH
924901825	T 18/25	M18X1,5	25 µ	ALU	→	NBR 70SH
924901840	T 18/40	M18X1,5	40 µ	ALU	→	NBR 70SH
924901860	T 18/60	M18X1,5	60 µ	ALU	→	NBR 70SH
924901880	T 18/80	M18X1,5	80 µ	ALU	→	NBR 70SH
924901413	T 14/10	1 / 4" BSP	10 µ	ALU	→	VITON
924901427	T 14/25	1 / 4" BSP	25 µ	ALU	→	VITON
924901442	T 14/40	1 / 4" BSP	40 µ	ALU	→	VITON
924901462	T 14/60	1 / 4" BSP	60 µ	ALU	→	VITON
924901482	T 14/80	1 / 4" BSP	80 µ	ALU	→	VITON
924903812	T 38/10	3 / 8" BSP	10 µ	ALU	→	VITON
924903827	T 38/25	3 / 8" BSP	25 µ	ALU	→	VITON
924903842	T 38/40	3 / 8" BSP	40 µ	ALU	→	VITON
924903862	T 38/60	3 / 8" BSP	60 µ	ALU	→	VITON
924903882	T 38/80	3 / 8" BSP	80 µ	ALU	→	VITON
924901812	T 18/10	M18X1,5	10 µ	ALU	→	VITON
924901827	T 18/25	M18X1,5	25 µ	ALU	→	VITON
924901842	T 18/40	M18X1,5	40 µ	ALU	→	VITON
924901862	T 18/60	M18X1,5	60 µ	ALU	→	VITON
924901882	T 18/80	M18X1,5	80 µ	ALU	→	VITON
924901411	T-R 14/10	1 / 4" BSP	10 µ	ALU	↔	NBR 70SH
924901426	T-R 14/25	1 / 4" BSP	25 µ	ALU	↔	NBR 70SH
924901441	T-R 14/40	1 / 4" BSP	40 µ	ALU	↔	NBR 70SH
924901461	T-R 14/60	1 / 4" BSP	60 µ	ALU	↔	NBR 70SH

P/N	DESCRIPTION	THREAD	FILTERING	BODY	FLOW	TYPE
924901481	T-R 14/80	1 / 4" BSP	80 µ	ALU	↔	NBR 70SH
924903811	T-R 38/10	3 / 8" BSP	10 µ	ALU	↔	NBR 70SH
924903826	T-R 38/25	3 / 8" BSP	25 µ	ALU	↔	NBR 70SH
924903841	T-R 38/40	3 / 8" BSP	40 µ	ALU	↔	NBR 70SH
924903861	T-R 38/60	3 / 8" BSP	60 µ	ALU	↔	NBR 70SH
924903881	T-R 38/80	3 / 8" BSP	80 µ	ALU	↔	NBR 70SH
924901811	T-R 18/10	M18X1,5	10 µ	ALU	↔	NBR 70SH
924901826	T-R 18/25	M18X1,5	25 µ	ALU	↔	NBR 70SH
924901841	T-R 18/40	M18X1,5	40 µ	ALU	↔	NBR 70SH

G 1/2"



G 1/4"



Marcatura filtro:

I filtri in linea della Serie 350, così come tutti i filtri BELL, vengono marcati per tipologia, brand, attacco, data di produzione e operatore. Marcatura personalizzata su richiesta.



Tutti i prodotti BELL sono progettati e realizzati all'interno di BELL SRL in via F. De Pisis, 5 – 42124 Reggio Emilia (RE) – Italia, secondo i canoni di Qualità che contraddistinguono il MADE IN ITALY dal resto del Mondo.