

## CAB TILTING SYSTEM HYDRAULIC CYLINDERS

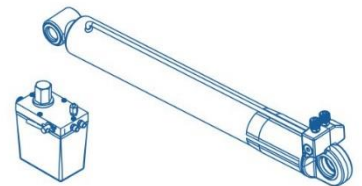


*For cab tilting systems, IVECO, single and double effect*

### Series: IVECO

Product line: hydraulic cylinders, cab tilting, automotive, truck line, Iveco aftermarket, farming, agriculture, industry, transport, industrial vehicles

- Manual operation
- Compact design
- Working pressure up to 420bar
- Adjustable relief valve
- 440 and 580 cm<sup>3</sup> oil tanks
- Temperature range -40 ° C + 80 ° C
- Oil flow 4cm<sup>3</sup> / stroke
- Resistance to corrosion and atmospheric agents
- Oil fill and level control cap
- <weight 2,5Kg



### Technical features:

Cylinder compatibility:	Single/Double effect
Nominal pressure (bar):	350/440
Thrust force (kN)	from 21,6 to 42,3
Pull force (kN)	from 20,7 to 46,9
Length btw centers (closed) (mm):	from 532 to 708
Length btw centers (open) (mm):	from 951 to 1195
Stroke (mm):	from 419 to 515
Idle stroke (mm):	from 43 to 80
Fluid type:	UNIVIS J-26/L.H.M.
Working temperature (°C):	-40 +80
Final paint	18-1600
Weight (kg)	from ≈ 5,6 to 14



All BELL products are designed and manufactured within BELL SRL in via F. De Pisis, 5 - 42124 Reggio Emilia (RE) - Italy, according to the Quality Standards that distinguish the MADE IN ITALY from the Rest of the World.