



## Ultra Air Pump

### UPC – Ultra Air Pump Cetop

*Air-hydraulic pump, double acting, CETOP 3 connection, oil flow (l / min) 0,8 / 0,14 (1000bar) - 1,1 / 0,15 (l / min) a (700bar) - 2,1 / 0,2 (500bar) - 2.5 / 0.25 (400bar) - 2.6 / 0.7 (250bar)*

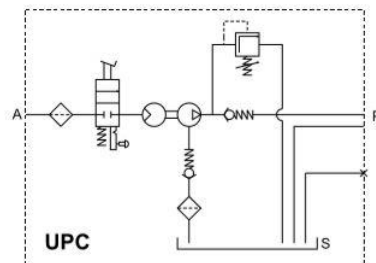
#### Series: UP

Product line: Industrial tools, clamping systems, automations

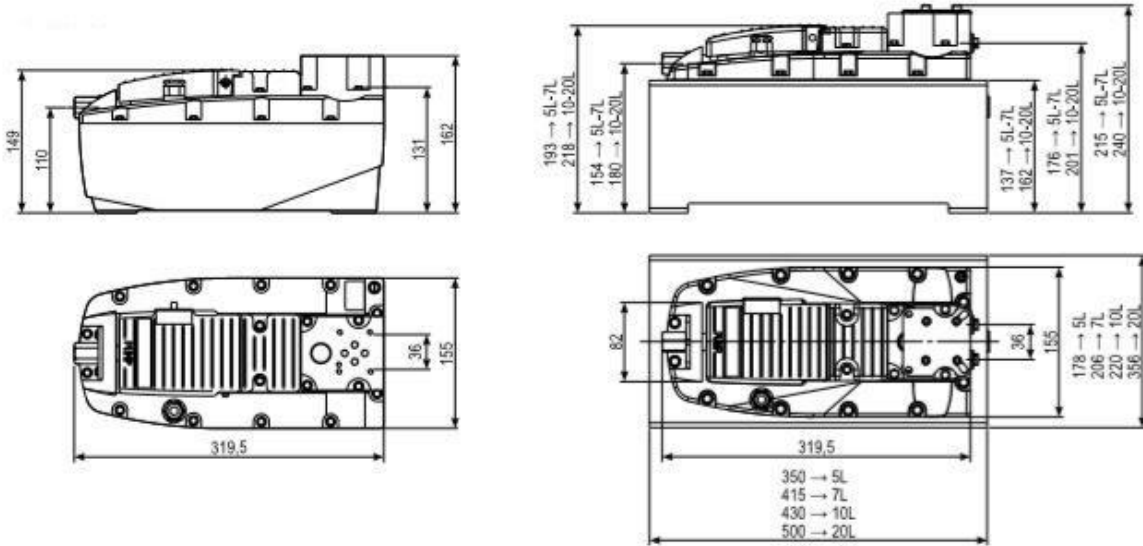
- Two-position pedal (forward / hold) with lock-up function
- CETOP 3 universal connection
- Configuration for mounting valves or valve groups (optional)
- Double-acting cylinder compatibility (single-acting cylinder operation allowed)
- Compact and robust construction for heavy duty and durability
- Easy maintenance
- No air lubricated required
- It works through the normal pneumatic network
- Versatile use in both vertical and horizontal positions
- Vent screw on the lid for tank ventilation during use
- Relief safety valve on the lid
- Maximum oil pressure valve adjustable from the outside to protect the circuit components
- Removable pyrex porthole level indicator for maximum easy refill
- Slots on the base support for easy installation onto the application
- Lightweight
- Low noise (75dBa)
- Various tank capacities (2.4 - 5 - 10 - 20) L for small and large cylinders

#### Technical features:

Max working pressure (bar):	250	400	500	700	1000
Cylinder compatibility:	Double acting (Single acting allowed) (optional valve groups)				
Tank capacity (L):	2,4 – 5 – 7 – 10 – 12 – 20				
Usable oil (L):	2,1 – 4,65 – 6,9 – 9,5 – 11,1 – 19,4				
Max flow rate at nominal pressure (l/min):	0,7	0,25	0,2	0,15	0,14
Oil flow without load (l/min):	2,6	2,5	2,1	1,1	0,8
Oil flow with load (l/min):	0,7	0,25	0,2	0,15	0,14
Oil port:	3/8"NPTF (G3/8" – G1/4")				
Air port:	G1/4"				
Valve function:	Advance/Hold				
Valve operation:	Automatic/Manual				
Energy source:	Air				
Pneumatic range (bar):	2,8/8,3 (10 max)				
Average air consumption (l/min):	390		320	400	400
Noise (dBA):	75				
Weight (Kg):	6,8				



## Size:



## Series Comparison:

Type	Max pressure (bar)	Cylinder	Tank (L)	Usable oil (L)	Oil flow unload (l/min)	Oil flow load (l/min)	Air range (bar)	Air consump (l/min)	Weight (kg)
UPC1002	1000	D.E.	2,4	2,1	0,8	0,14	2,8/10		6,8
UPC702	700	D.E.	2,4	2,1	1,1	0,15	2,8/10	50/440	6,5
UPC502	500	D.E.	2,4	2,1	2,1	0,2	2,8/10	110/320	6,8
UPC402	400	D.E.	2,4	2,1	2,5	0,25	2,8/10		6,7
UPC252	250	D.E.	2,4	2,1	2,6	0,7	2,8/10	180/390	6,7

## To order:

- P/N 915210510 UPC1002 1000BAR BELL
- P/N 915210080 UPC702 700BAR BELL
- P/N 915210350 UPC502 500BAR BELL
- P/N 915200xxx UPC402 400BAR BELL
- P/N 915210020 UPC252 250BAR BELL

## Accessories:

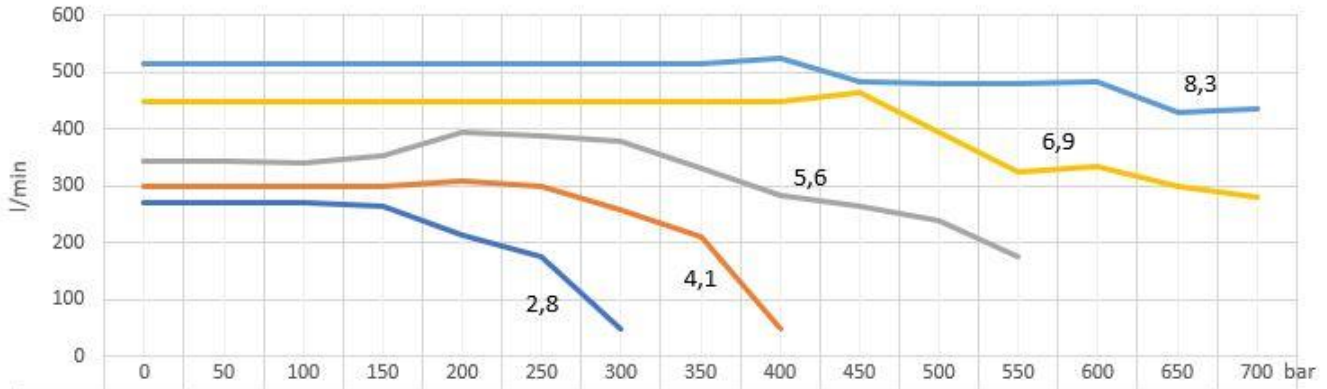
- Oversized tank
- Fixing plates
- Fittings
- Hose Flex
- In-line hand valve

## Spare parts

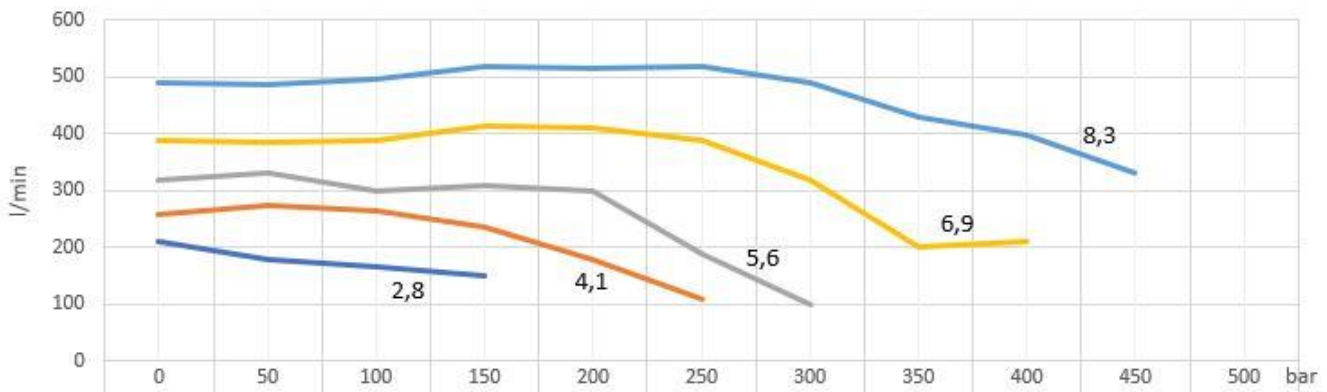
- SEAL KIT UPC

**Diagrammi consumo aria (l/min) - (air consumption):**

**Air Consume UP700**

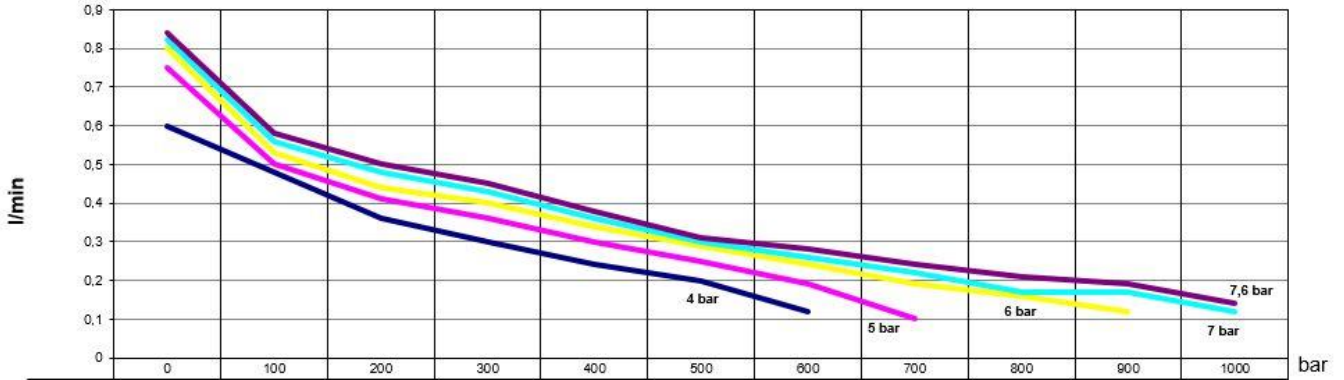


**Air Consume UP500**

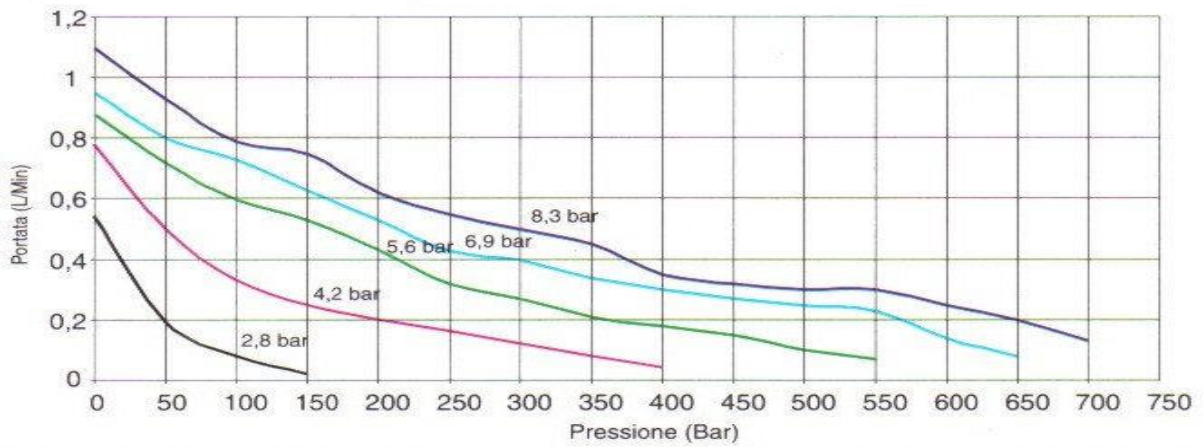


**Diagrammi portata (l/min) - (oil flow):**

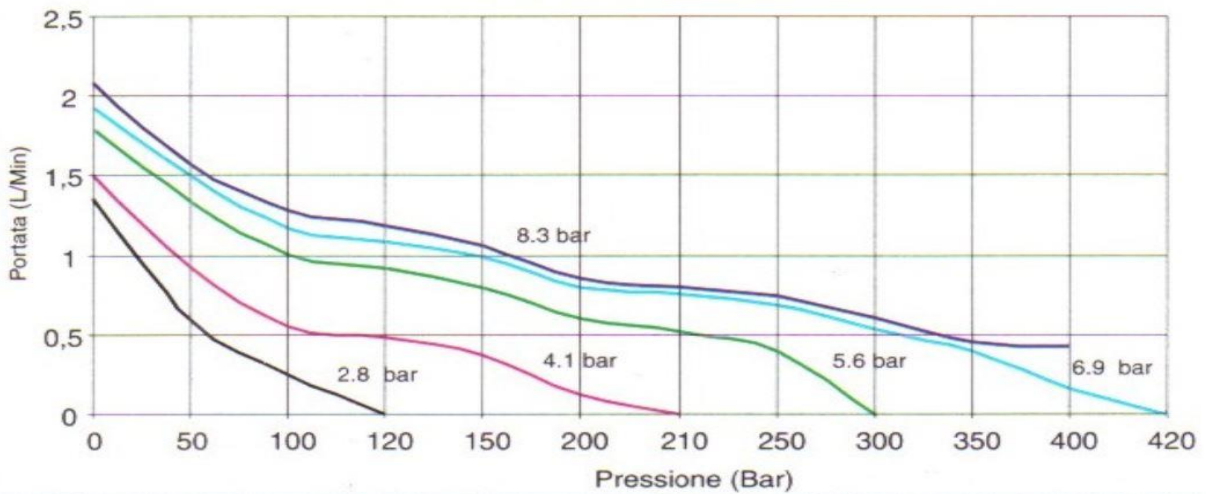
UP1000



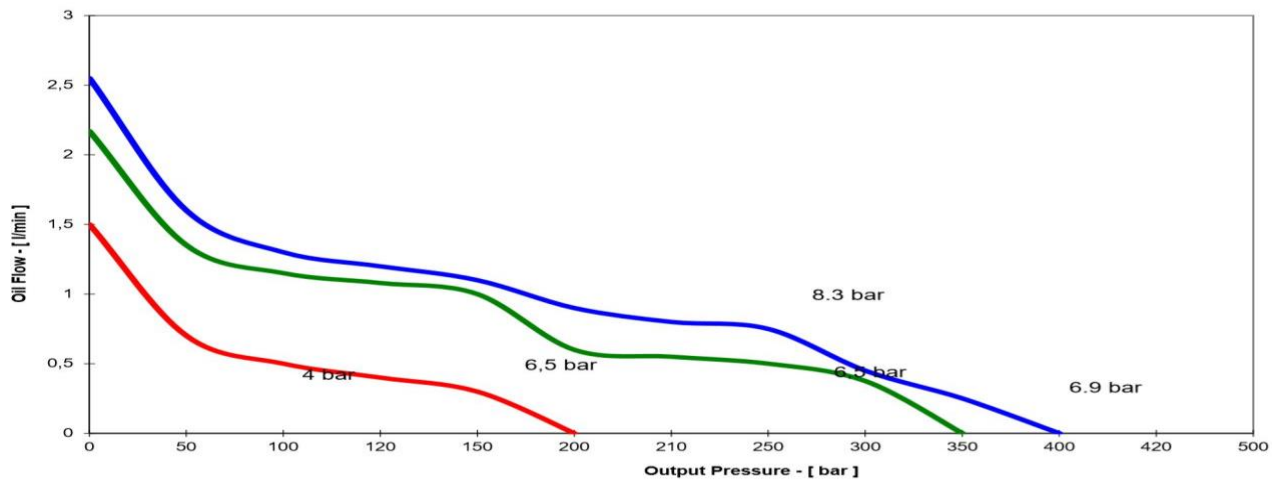
UP700



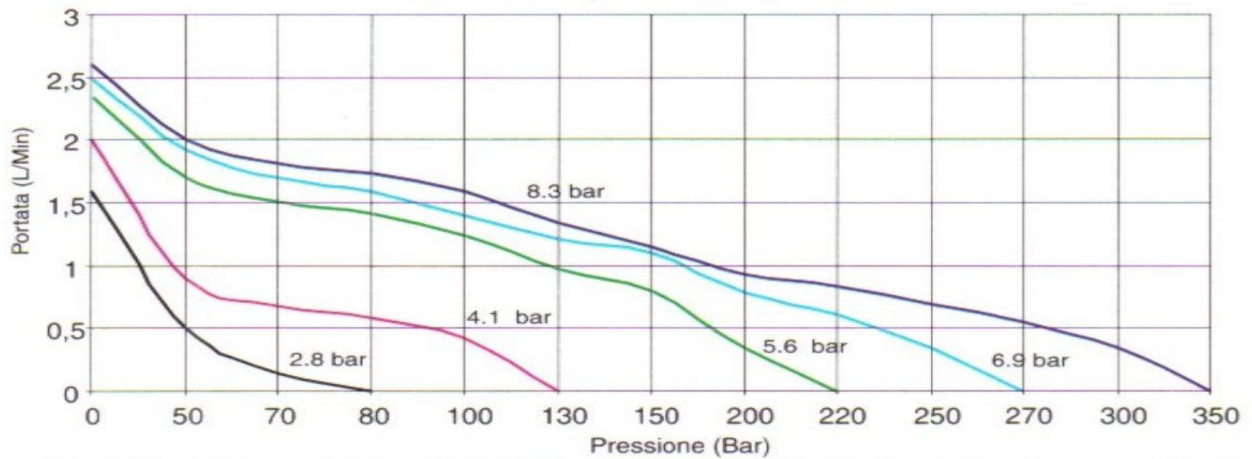
UP500



UP400



UP250



All BELL products are designed and manufactured within BELL SRL in via F. De Pisis, 5 - 42124 Reggio Emilia (RE) - Italy, according to the Quality Standards that distinguish the MADE IN ITALY from the Rest of the World.