



Ultra Air Pump H₂O

UPF252-H₂O

Air-water pump, single acting, for water use (H₂O), pedal operated, water flow 2.6 l / min (0.7 l / min at full load), water pressure 250bar, tank capacity 2.4L

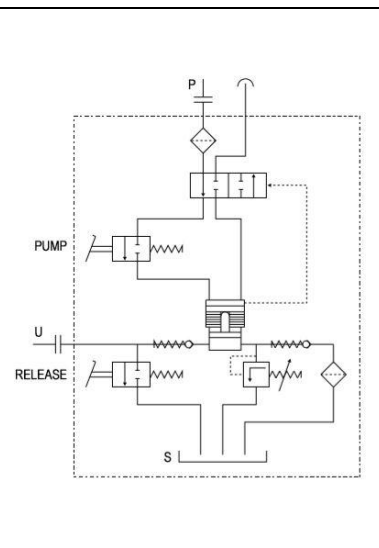
Series: UP-H2O

Product line: thermo-hydraulic, thermo-sanitary, civic network, industrial network, control units for plant testing

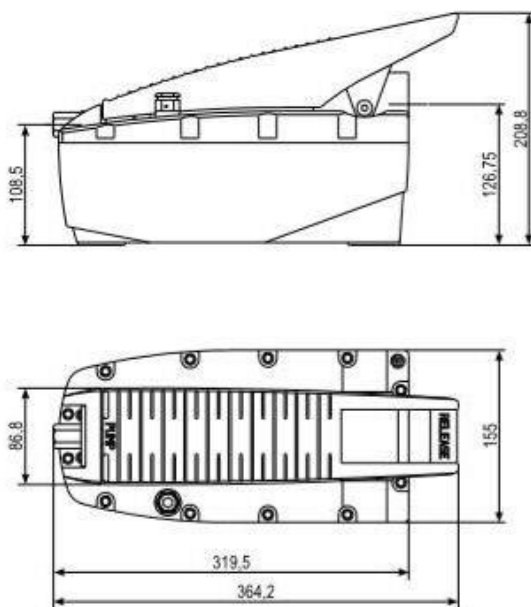
- Pedal operation (also available with any other operation device among those in range)
- Unmistakable pedal design with handle for easy transport
- 3-position pedal operation with spring return (advance, hold and release)
- Single acting
- Compact and sturdy construction for heavy duty and long durability
- Easy maintenance
- No air lubricated required
- It works through the standar pneumatic air network
- Versatile use in both vertical and horizontal positions
- Preset safety valve on the cover to protect the pump
- Maximum water pressure valve adjustable from the outside
- Removable pyrex porthole level indicator
- Slots on the base support for easy installation
- Integral brass pump body
- Stainless steel piston
- 3/8 "NPTF stainless steel driving block
- Internal air filter and water filter
- Lightweight
- Low noise (75dBa)
- Water tank capacity 2,4L for small and medium size systems.

Technical features:

Max working pressure (bar):	250
Cylinder compatibility:	Single acting
Water tank capacity (L):	2,4
Usable water (L):	2,1
Max water flow nominal (l/min):	0,7
Max water flow without load (l/min):	2,6
Max water flow with load (l/min):	0,7
Output port:	3/8"NPTF INOX
Air port:	G1/4"
Valve operation:	Advance/Hold/Return
Valve function:	Manual
Power supply:	Air
Source of use:	Water H ₂ O
Pneumatic range (bar):	2,8-8,3 (10 max)
Average air consumption (l/min):	180/390
Noise (dBA):	75
Weight (Kg):	6,7



Size:



Series comparison:

Type	Output Max (bar)	Cyl	Tank (L)	Usable (L)	Flow w/out load (l/min)	Power supply	Flow with load (l/min)	Air range (bar)	Air consumpt (l/min)	Weight (kg)
UPF252-H2O	250	S.E.	2,4	2,1	8,5	Air	0,7	2,8-8,3	180/390	6,7
UPM2510-H2O	250	D.E.	10	9,6	8,5	Air	0,7	2,8-8,3	180/390	12,91
UPW250-H2O	250	S.E.	/	/	4,9	H2O	0,7	2,8-8,3	/	1,5

To order:

- P/N 915201430 UPF252 250BAR WATER USE
- P/N 915201440 UPF252 250BAR WATER USE (NO TANK)

Accessories:

- Fixing plates
- Parking feet
- Pivoting wheels
- Hose flex

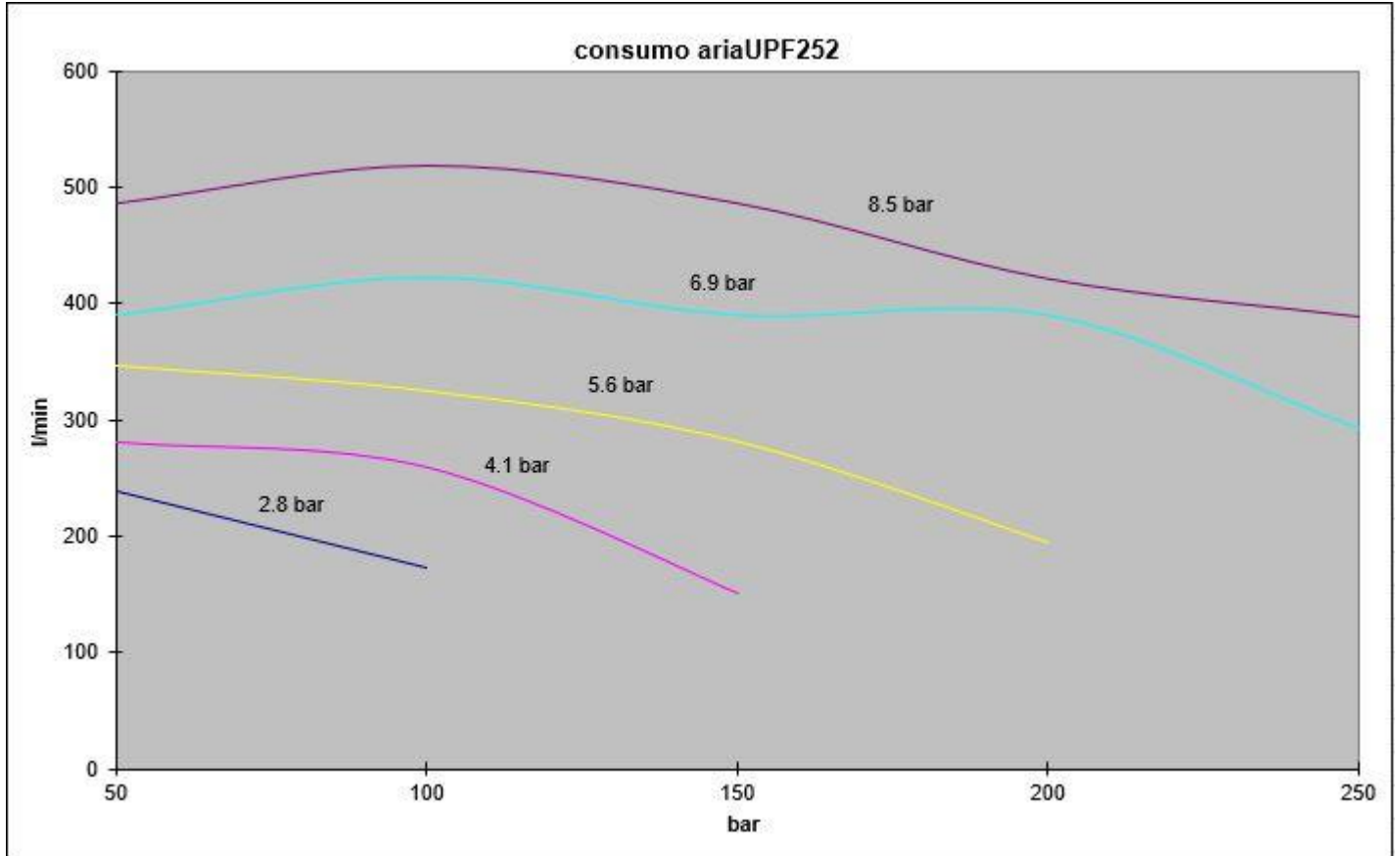
Spare parts:

P/N 800050080 SEAL KIT UPF252-H2O



All BELL products are designed and manufactured within BELL SRL in via F. De Pisis, 5 - 42124 Reggio Emilia (RE) - Italy, according to the Quality Standards that distinguish the MADE IN ITALY from the Rest of the World.

Diagrammi consumo aria (l/min) - (air consumption):



Diagrammi portata (l/min) - (oil flow):

