



Ultra Air Pump

UPM-2V

Air-hydraulic pump, double 4/3 distributor valve with 4 hydraulic outlets, manual operation, double acting, CETOP 3 flanged plate, pressure gauge and pressure reducers, oil flow (l / min) 0,8 / 0,14 (1000bar) - 1,1 / 0.15 (l / min) to (700bar) - 2.1 / 0.2 (500bar) - 2.5 / 0.25 (400bar) - 2.6 / 0.7 (250bar)

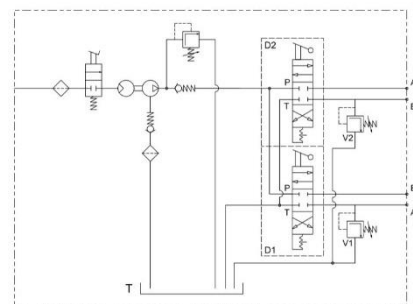
Series: UP

Product line: Industrial tools, clamping systems, automations, lifting systems

- Two-position pedal (forward / hold) lockable in the forward position
- CETOP 3 universal connection
- Double 4/3 steel hand valve assembled on a 4-way control driving block
- Control valves on each distributor
- Ø63mm pressure gauge - 0-1000bar scale installed
- Double-acting cylinder compatibility (single-acting allowed)
- Compact and sturdy construction for heavy duty and long durability
- Easy maintenance
- No air lubricated required
- It works through the normal pneumatic network
- Versatile use in both vertical and horizontal positions
- Vent screw on the lid for tank ventilation during use
- Relief safety valve on the lid
- Maximum oil pressure valve adjustable from the outside to protect the circuit components
- Removable pyrex porthole level indicator for maximum easy refill
- Slots on the base support for easy installation onto the application
- Lightweight
- Low noise (75dBa)
- Various tank capacities (2.4 - 5 - 10 - 20) L for small and large cylinders

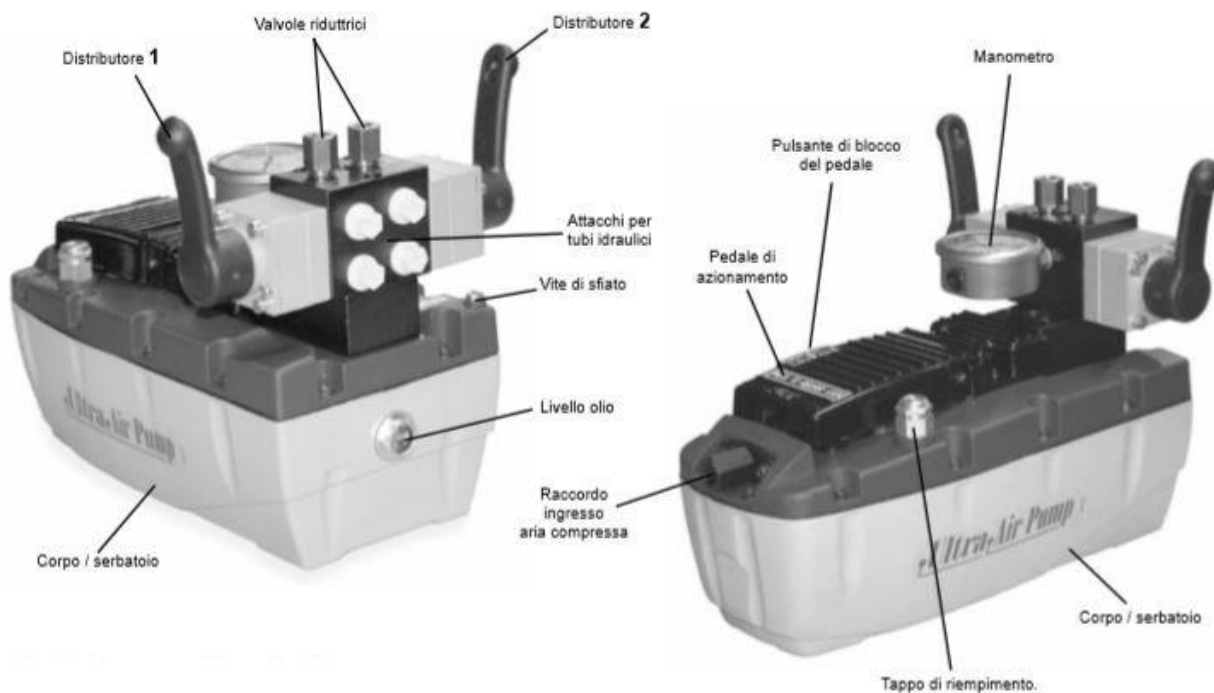
Technical features:

Max working pressure (bar):	250	400	500	700	1000
Cylinder compatibility:	Double acting/Double hand valve				
Tank capacity (L):	2,4 - 5 - 7 - 10 - 12 - 20				
Usable oil (L):	2,1 - 4,65 - 6,9 - 9,5 - 11,1 - 19,4				
Max flow rate at nominal pressure (l/min):	0,7	0,25	0,2	0,15	0,14
Oil flow without load (l/min):	2,6	2,5	2,1	1,1	0,8
Oil flow with load (l/min):	0,7	0,25	0,2	0,15	0,14
Oil port:	3/8"NPTF (G3/8" - G1/4")				
Air port:	G1/4"				
Valve function:	Advance/Hold/Hand valves				
Valve operation:	Automatic/Manual				
Energy source:	Air				
Pneumatic range (bar):	2,8/8,3 (10 max)				
Average air consumption (l/min):	390		320	400	400
Noise (dBA):	75				



Weight (Kg):	7,5
--------------	-----

Size:



Series comparison:

Type	Max pressure (bar)	Cylinder	Tank (L)	Usable oil (L)	Oil flow unload (l/min)	Oil flow load (l/min)	Air range (bar)	Air consump (l/min)	Weight (kg)
UPM1002	1000	D.E.	2,4	2,1	0,8	0,14	2,8/10		7,5
UPM702	700	D.E.	2,4	2,1	1,1	0,15	2,8/10	50/440	7,5
UPM502	500	D.E.	2,4	2,1	2,1	0,2	2,8/10	110/320	7,5
UPM402	400	D.E.	2,4	2,1	2,5	0,25	2,8/10		7,5
UPM252	250	D.E.	2,4	2,1	2,6	0,7	2,8/10	180/390	7,5
UPM-2V1002	1000	D.E.	2,4	2,1	0,8	0,14	2,8/10	400	7,5
UPM-2V702	700	D.E.	2,4	2,1	1,1	0,15	2,8/10		7,5
UPM-2V502	500	D.E.	2,4	2,1	2,1	0,2	2,8/10		7,5
UPM-2V402	400	D.E.	2,4	2,1	2,5	0,25	2,8/10		7,5
UPM-2V252	250	D.E.	2,4	2,1	2,6	0,7	2,8/10		7,5
UPMD710	700	D.E.	10	9,5	1,1	0,15	4/10	780	23,7
UPMD725-RC	700	D.E.	29	25	1,1	0,15	4/10	780	50

To order:

- P/N 91523042x UPM1002-2V 1000BAR BELL
- P/N 91523010x UPM702-2V 700BAR BELL
- P/N 91523011x UPM502-2V 500BAR BELL
- P/N 915230450 UPM252-2V 250BAR BELL

Accessories:

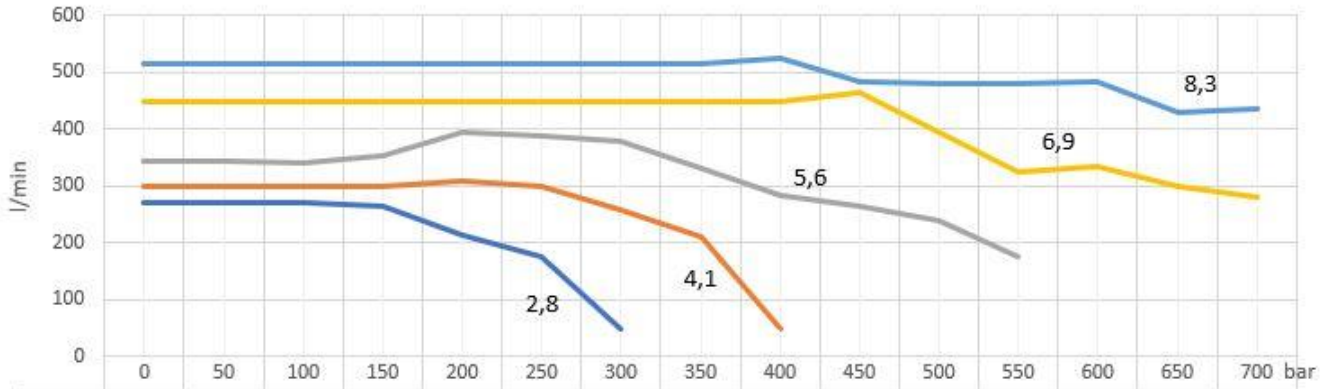
- Oversize tank
- Fixing plates
- Hose flex

Spare parts:

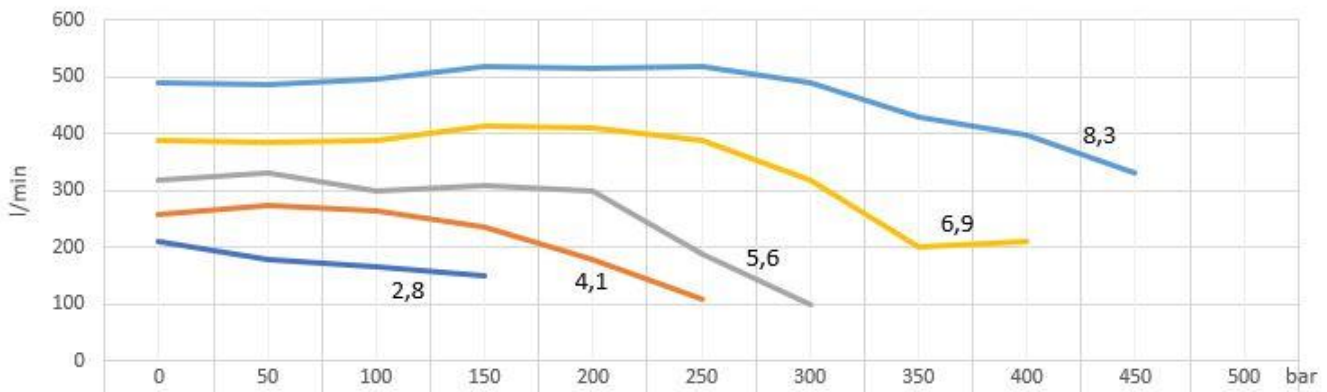
SEAL KIT UPM

Diagrammi consumo aria (l/min) - (air consumption):

Air Consume UP700

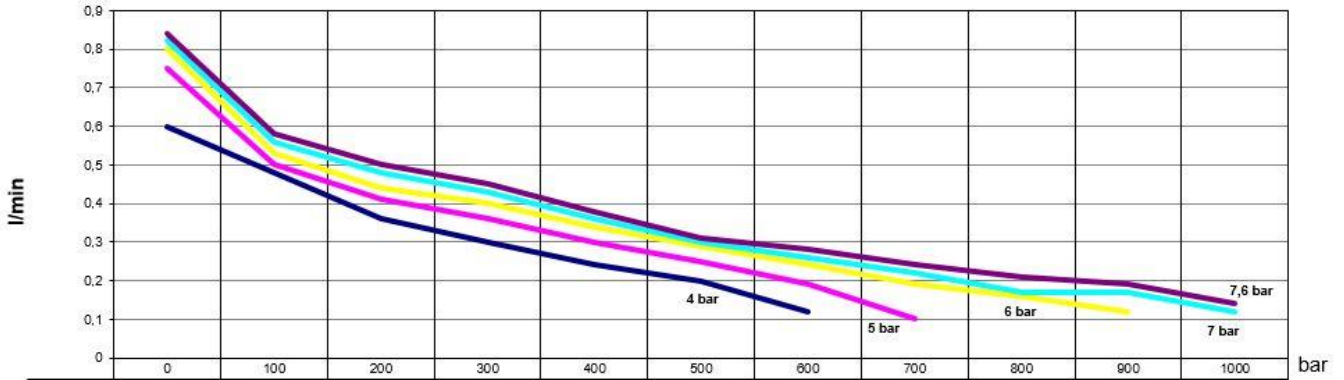


Air Consume UP500

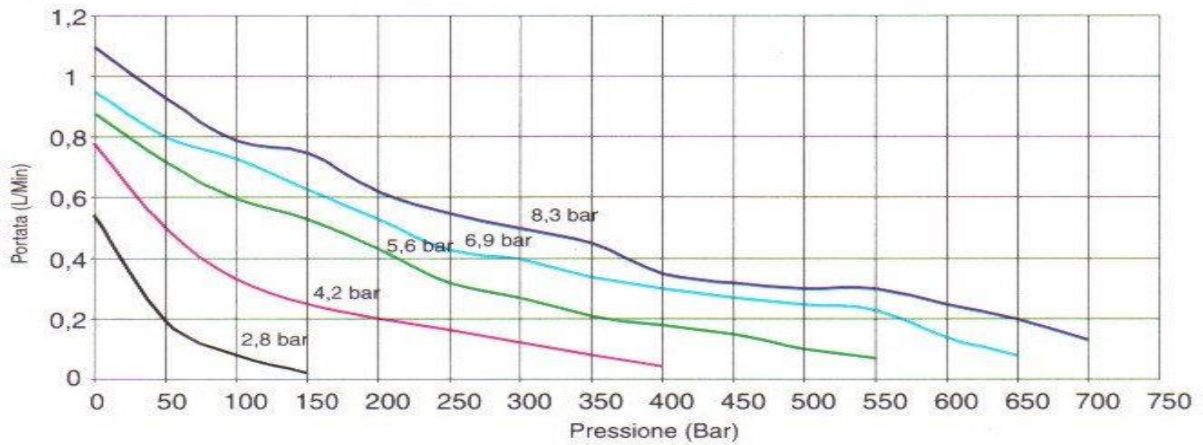


Diagrammi portata (l/min) - (oil flow):

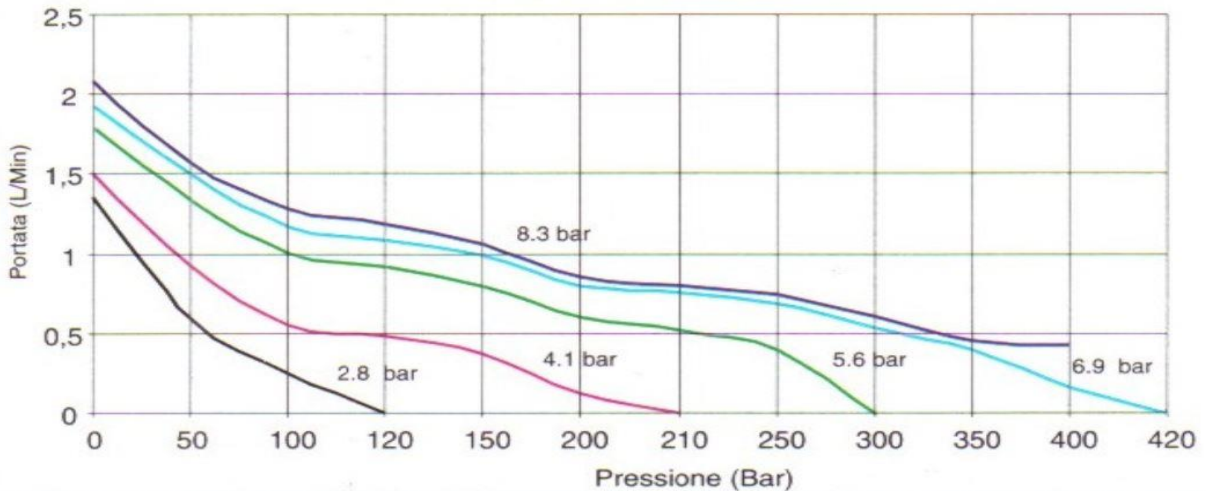
UP1000



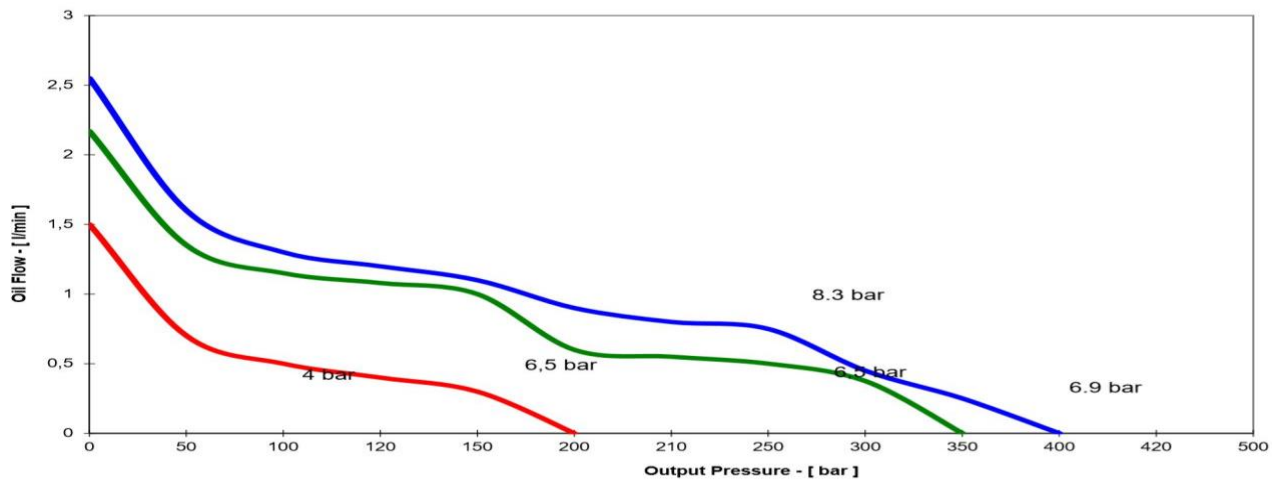
UP700



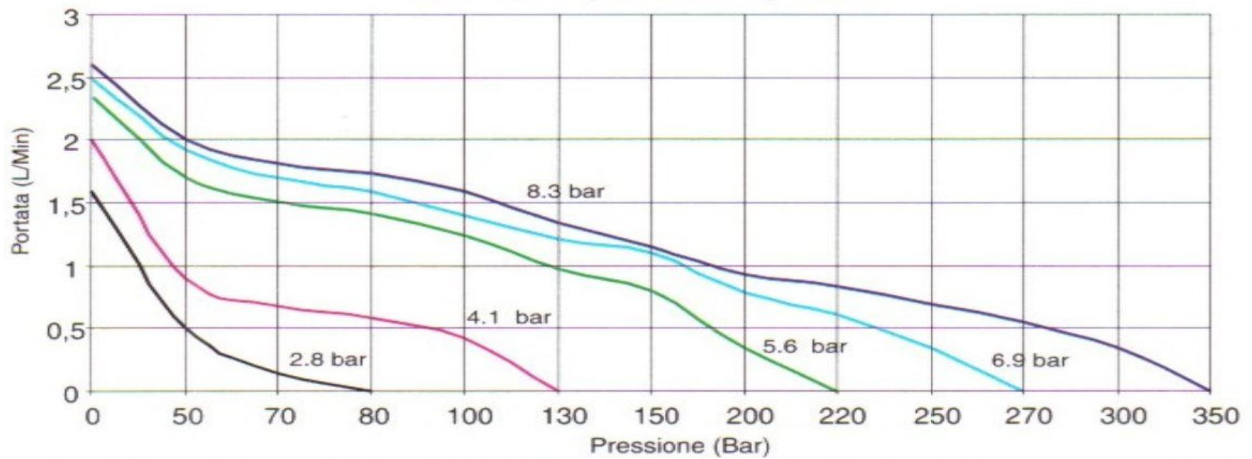
UP500



UP400



UP250



All BELL products are designed and manufactured within BELL SRL in via F. De Pisis, 5 - 42124 Reggio Emilia (RE) - Italy, according to the Quality Standards that distinguish the MADE IN ITALY from the Rest of the World.