



# Ultra Air Pump H<sub>2</sub>O

## UPM2510-H<sup>2</sup>O

*Air-water pump, double acting, CETOP 3, 4/3 stainless steel distributor valve, water flow 0.7 (l / min) at 250bar*

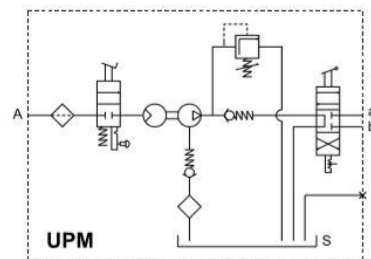
### Series: UP-H2O

Product line: thermo-hydraulic, thermo-sanitary, civic network, industrial network, control units for testing

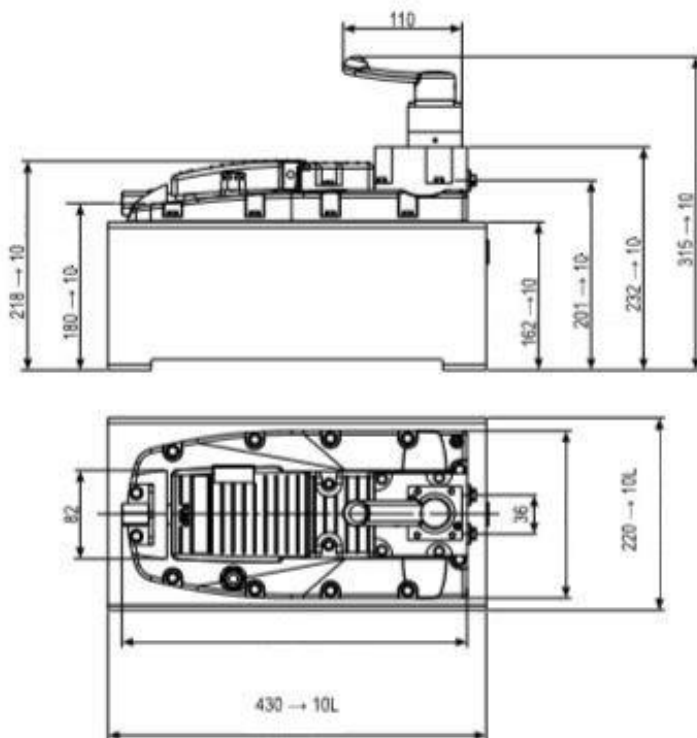
- Two-position pedal (advance / hold) lockable in advance on automatic systems
- CETOP 3 universal connection
- Stainless steel 4/3 way hand valve
- Double acting
- Compact and sturdy construction for heavy duty and long durability
- Easy maintenance
- No air lubricated required
- It works through the standar pneumatic air network
- Versatile use in both vertical and horizontal positions
- Preset safety valve on the cover to protect the pump
- Maximum water pressure valve adjustable from the outside
- Removable pyrex porthole level indicator
- Slots on the base support for easy installation
- Integral brass pump body
- Stainless steel piston
- 1/4" BSP stainless steel driving block
- Internal air filter and water filter
- Lightweight
- Low noise (75dBa)
- Water tank capacity 10l for big size systems
- Ergonomic handles for easy transport

### Technical features:

Max working pressure (bar):	250
Cylinder compatibility:	Double acting
Water tank capacity (L):	10
Usable water (L):	9,6
Max water flow nominal (l/min):	0,7
Max water flow without load (l/min):	2,6
Max water flow with load (l/min):	0,7
Output port:	G1/4" - INOX
Air port:	G1/4"
Valve operation:	Advance/Hold/Hand valve
Valve function:	Automatic/Manual
Power supply:	Air
Source of use:	Water H <sub>2</sub> O
Pneumatic range (bar):	2,8-8,3 (10 max)
Average air consumption (l/min):	180/390
Noise (dBA):	75
Weight (Kg):	12,9



**Size:**



**Series comparison:**

Type	Output Max (bar)	Cyl	Tank (L)	Usable (L)	Flow w/out load (l/min)	Power supply	Flow with load (l/min)	Air range (bar)	Air consumpt (l/min)	Weight (kg)
UPF252-H2O	250	S.E.	2,4	2,1	8,5	Air	0,7	2,8-8,3	180/390	6,7
UPM2510-H2O	250	D.E.	10	9,6	8,5	Air	0,7	2,8-8,3	180/390	12,91
UPW250-H2O	250	S.E.	/	/	4,9	H2O	0,7	2,8-8,3	/	1,5

**To order:**

- P/N 915330510 UPM2510 200BAR WATER USE

**Accessories:**

- Pressure gauge kit
- Parking feet
- Pivoting wheels
- Hose flex

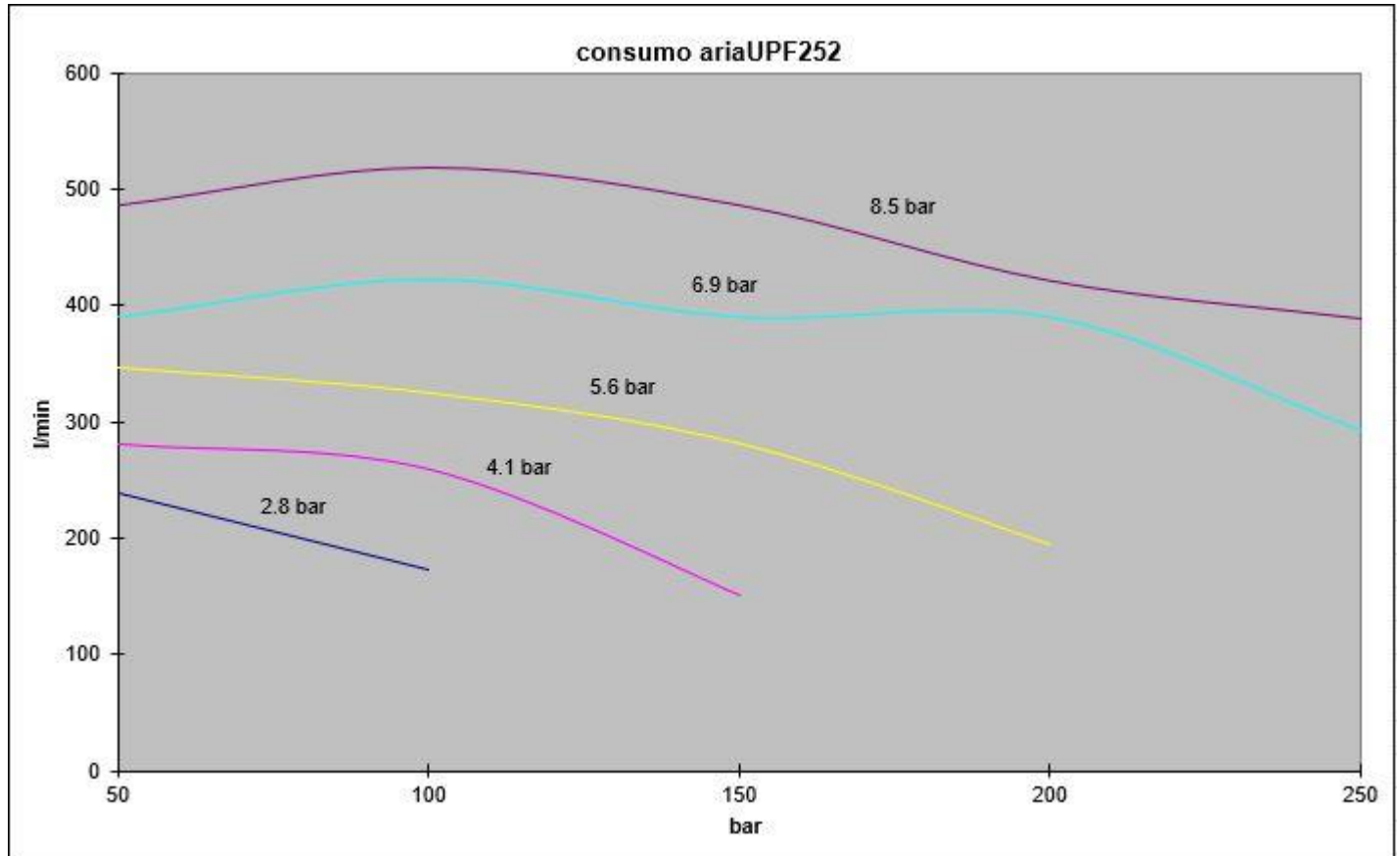
**Spare parts:**

SEAL KIT UPM2510-H2O



All BELL products are designed and manufactured within BELL SRL in via F. De Pisis, 5 - 42124 Reggio Emilia (RE) - Italy, according to the Quality Standards that distinguish the MADE IN ITALY from the Rest of the World.

**Diagrammi consumo aria (l/min) - (air consumption):**



**Diagrammi portata (l/min) - (oil flow):**

