



## Ultra Air Pump

### UPR

*Air-hydraulic pump, remote controlled operation, ergonomic push-button panel, pneumatic connection length 3m, oil flow (l / min) 0,8 / 0,14 (1000bar) - 1,1 / 0,15 (l / min) a (700bar) - 2.1 / 0.2 (500bar) - 2.5 / 0.25 (400bar) - 2.6 / 0.7 (250bar)*

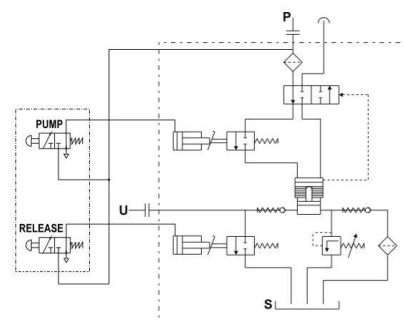
#### Series: UP

Product line: Industrial tools, bodywork, car repairers, lifting systems

- Pneumatic piston drive with brass pins
- Pneumatic operation through a 2 or 3 button remote control (safety/emergency)
- Ergonomic handle for easy transport
- Pneumatic connection to the push-button panel standard length 3m (can be supplied to measure)
- Protective case
- Single acting cylinder compatibility
- Compact and sturdy construction for heavy duty long durability
- No air lubricated required
- It works through the normal pneumatic network
- Versatile use in both horizontal and vertical positions
- Venting screw on the cover to avoid any air overpressure inside the oil tank during the operations
- Preset safety valve on the cover to protect the pump
- Maximum oil pressure valve adjustable from the outside to protect the hydraulic circuit parts
- Removable pyrex oil level indicator for easy refill and relief valve adjustments
- Slots on the base support for easy installation fix on the system
- Lightweight
- Low noise (75dBa)
- Oversize oil tanks available (2,4 – 5 – 10 – 20) L for small and bigger cylinders

#### Technical features:

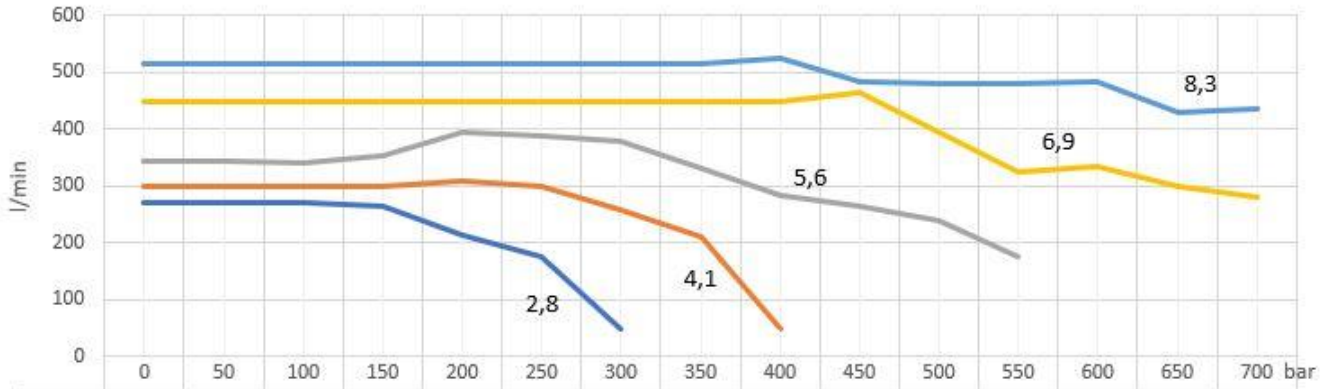
|                                  |  |      |     |      |      |
|----------------------------------|--|------|-----|------|------|
| Max working pressure (bar):      | 250  | 400  | 500 | 700  | 1000 |
| Cylinder compatibility:          | Single effect<br>Double effect through hand valve (optional) |      |     |      |      |
| Oil tank capacity (L):           | 2,4 – 5 – 7 – 10 – 12 – 20                                   |      |     |      |      |
| Usabel oil (L):                  | 2,1 – 4,65 – 6,9 – 9,5 – 11,1 – 19,4                         |      |     |      |      |
| Max oil flow nominal (l/min):    | 0,7  | 0,25 | 0,2 | 0,15 | 0,14 |
| Oil flow without load (l/min):   | 2,6  | 2,5  | 2,1 | 1,1  | 0,8  |
| Oil flow with load (l/min):      | 0,7  | 0,25 | 0,2 | 0,15 | 0,14 |
| Oil port:                        | 3/8"NPTF (G3/8" – G1/4")                                     |      |     |      |      |
| Air port:                        | G1/4"  |      |     |      |      |
| Valve operation:                 | Advance/Hold/Release   |      |     |      |      |
| Power source:                    | Manuale  |      |     |      |      |
| Pneumatic range (bar):           | Aria   |      |     |      |      |
| Average air consumption (l/min): | 2,8/8,3 (10 max)   |      |     |      |      |
| Noise (dBA):                     | 390  |      | 320 | 400  | 400  |
| Weight (Kg):                     | 75   |      |     |      |      |
| Cylinder compatibility:          | 7,8  |      |     |      |      |



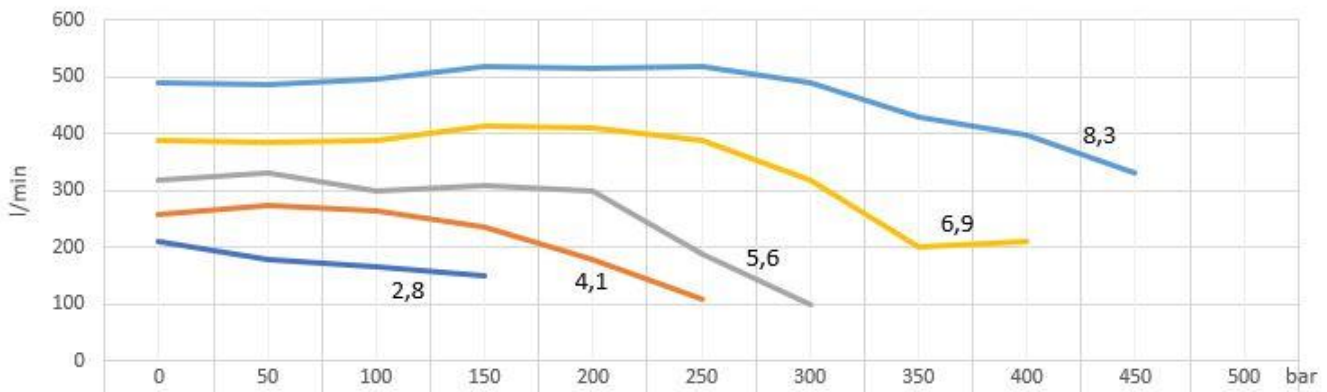


**Diagrammi consumo aria (l/min) - (air consumption):**

**Air Consume UP700**

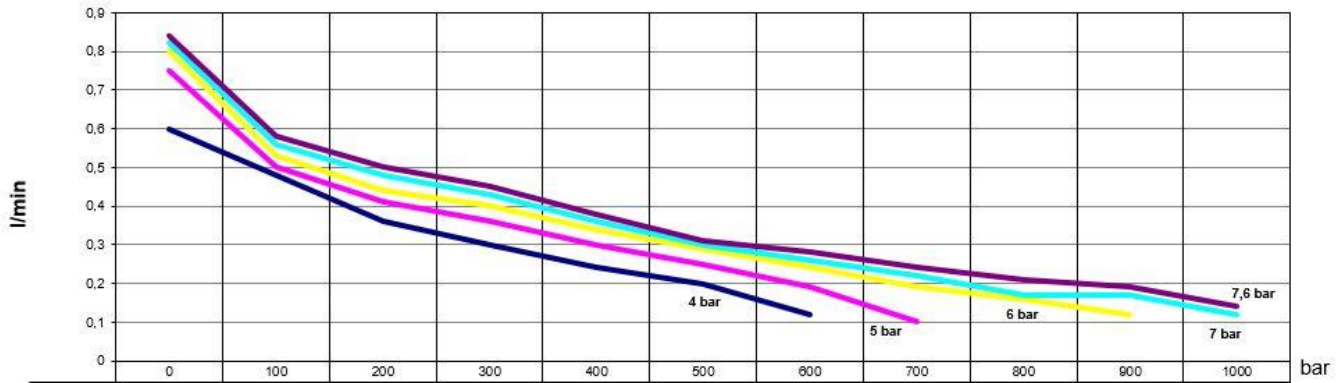


**Air Consume UP500**

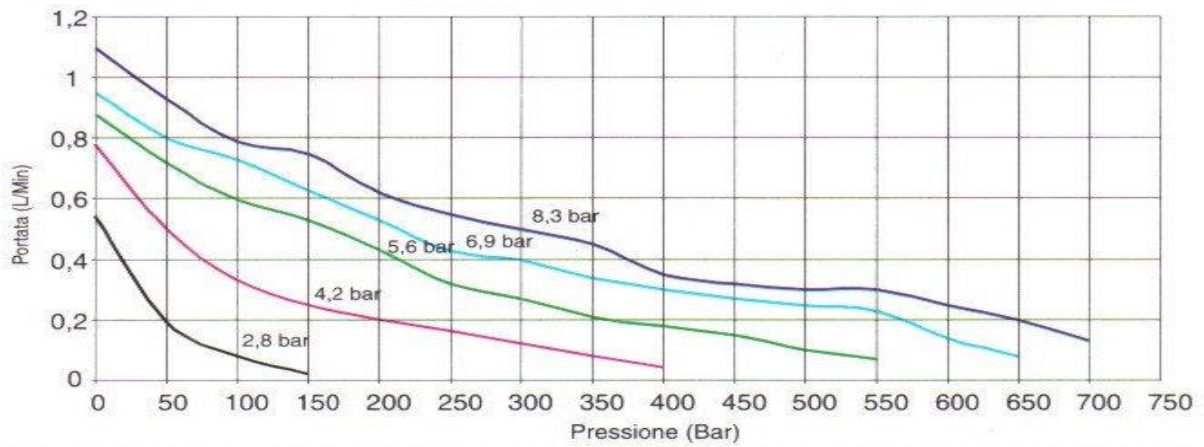


**Diagrammi portata (l/min) - (oil flow):**

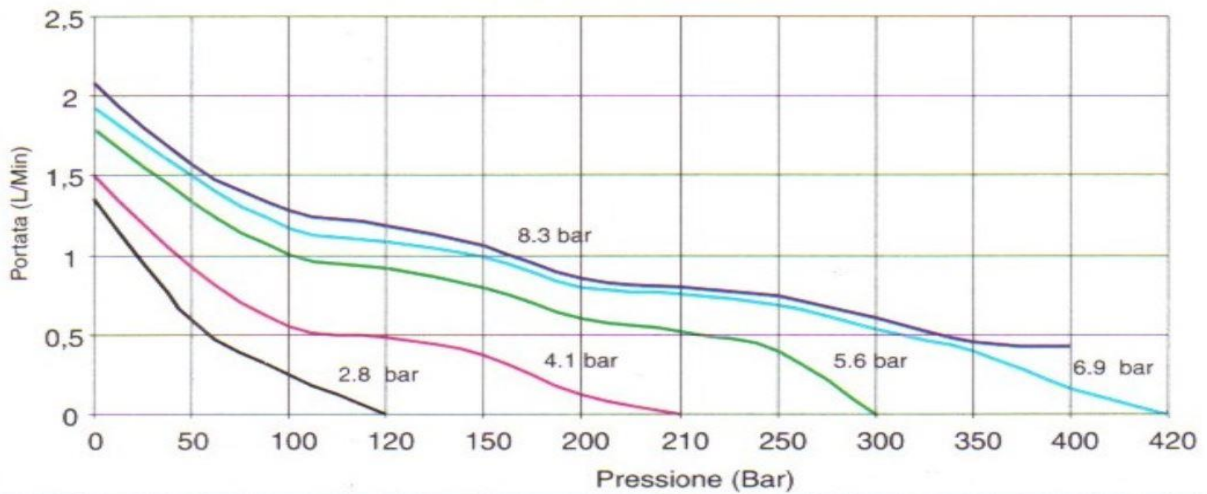
UP1000



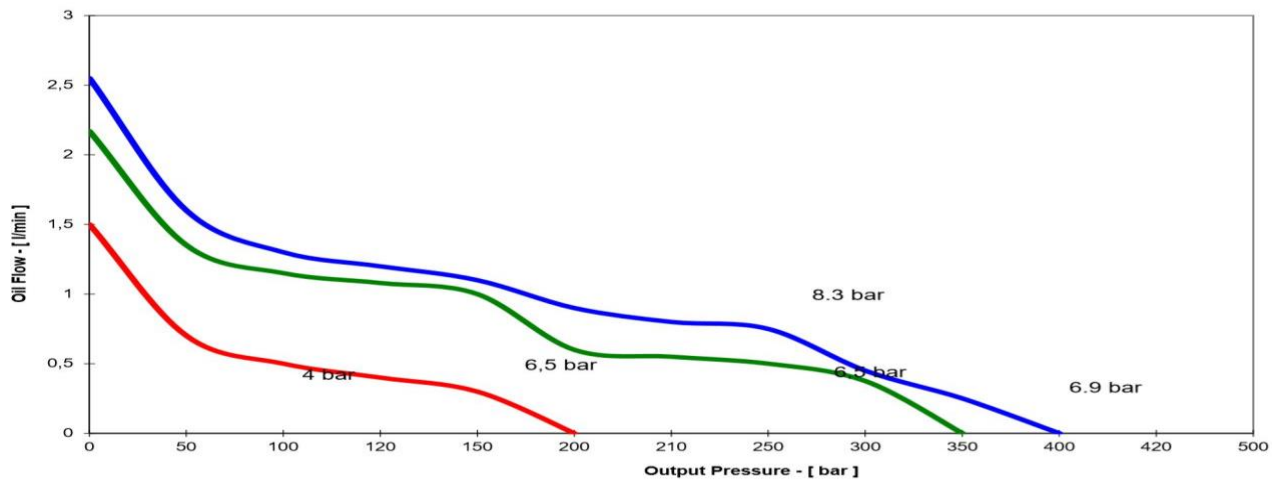
UP700



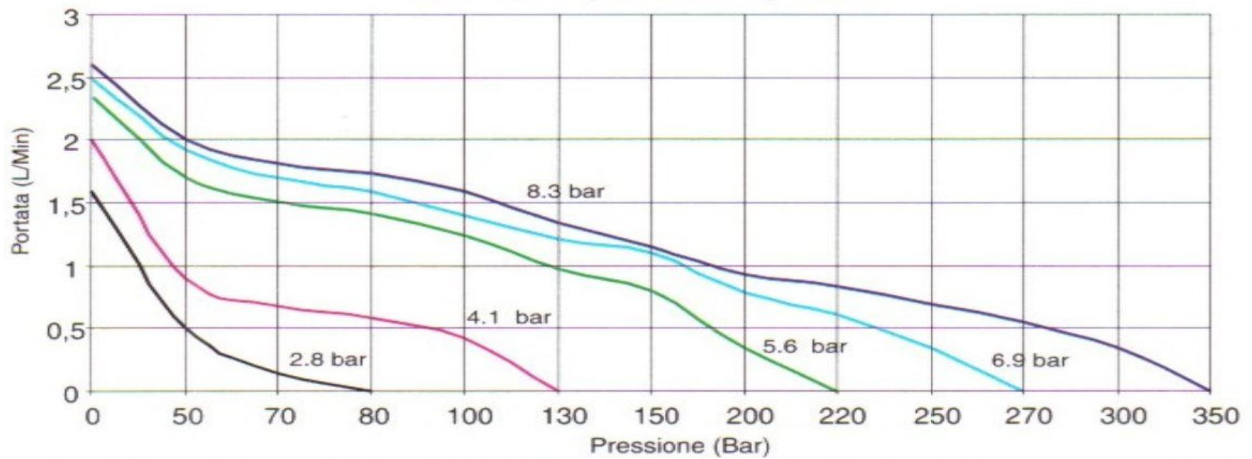
UP500



UP400



UP250



**All BELL products are designed and manufactured within BELL SRL in via F. De Pisis, 5 - 42124 Reggio Emilia (RE) - Italy, according to the Quality Standards that distinguish the MADE IN ITALY from the Rest of the World.**