

Ultra Air Pump



UPRD

Air-hydraulic pump, remote control operation, double acting, ergonomic 3-button push-button panel, pneumatic connection length 3m, oil flow 0.14 (l / min) at 1.000bar

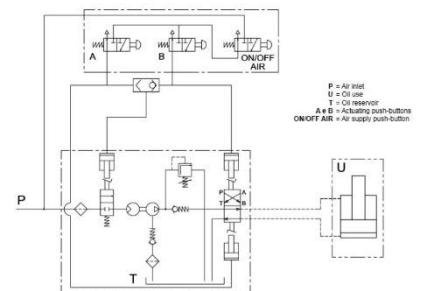
Series: UP

Product line: Industrial tools, bodywork, car repairers, lifting systems

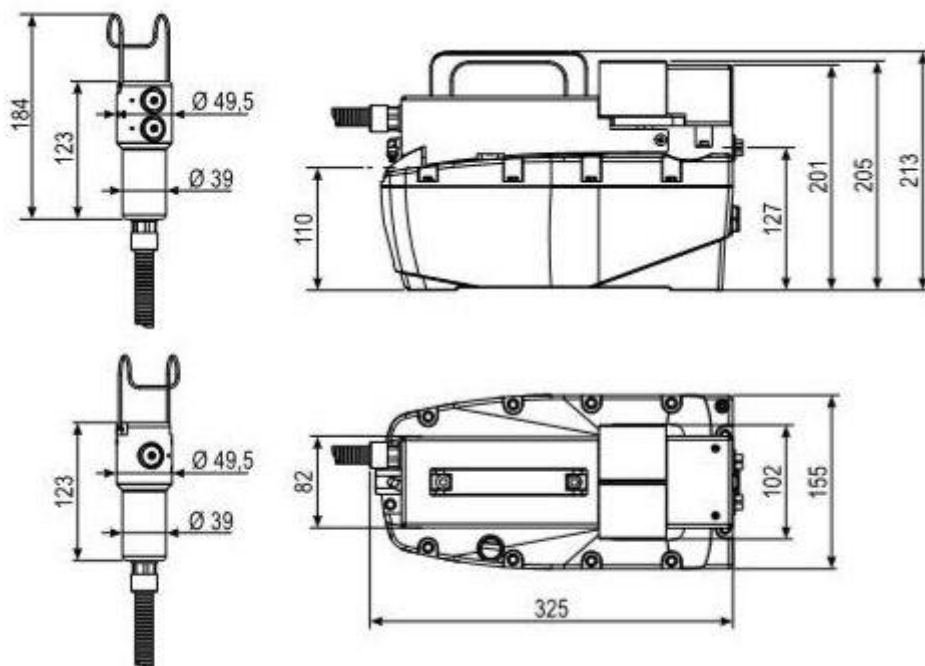
- Pneumatic piston drive with brass pins
- Pneumatic piston system for double acting cylinders
- Pneumatic operation through a 2 or 3 button remote control (safety/emergency)
- Ergonomic handle for easy transport
- Pneumatic connection to the push-button panel standard length 3m (can be supplied to measure)
- Protective case
- Double acting cylinder compatibility
- Compact and sturdy construction for heavy duty long durability
- No air lubricated required
- It works through the normal pneumatic network
- Versatile use in both horizontal and vertical positions
- Venting screw on the cover to avoid any air overpressure inside the oil tank during the operations
- Preset safety valve on the cover to protect the pump
- Maximum oil pressure valve adjustable from the outside to protect the hydraulic circuit parts
- Removable pyrex oil level indicator for easy refill and relief valve adjustments
- Slots on the base support for easy installation fix on the system
- Lightweight
- Low noise (75dBa)
- Oversize oil tanks available (2,4 – 5 – 10 – 20) L for small and bigger cylinders

Technical features:

Max working pressure (bar):	250	400	500	700	1000
Cylinder compatibility:	Double acting				
Oil tank capacity (L):	2,4 – 5 – 7 – 10 – 12 – 20				
Usabel oil (L):	2,1 – 4,65 – 6,9 – 9,5 – 11,1 – 19,4				
Max oil flow nominal (l/min):	0,7	0,25	0,2	0,15	0,14
Oil flow without load (l/min):	2,6	2,5	2,1	1,1	0,8
Oil flow with load (l/min):	0,7	0,25	0,2	0,15	0,14
Oil port:	3/8"NPTF (G3/8" – G1/4")				
Air port:	G1/4"				
Valve operation:	Advance/Hold/Release				
Valve function:	Manual/Pneumatic				
Power source:	Air				
Pneumatic range (bar):	2,8/8,3 (10 max)				
Average air consumption (l/min):	390		320	400	400
Noise (dBA):	75				
Weight (Kg):	9,8				



Size:

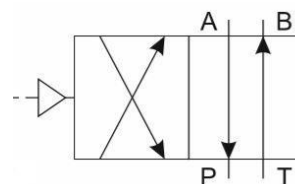


Series comparison:

Type	Max pressure (bar)	Cylinder	Tank (L)	Usable oil (L)	Oil flow unload (l/min)	Oil flow load (l/min)	Air range (bar)	Air consump (l/min)	Weight (kg)
UPRD1002	1000	D.E.	2,4	2,1	0,8	0,14	2,8/10		9,8
UPRD702	700	D.E.	2,4	2,1	1,1	0,15	2,8/10	50/440	9,8
UPRD502	500	D.E.	2,4	2,1	2,1	0,2	2,8/10	110/320	9,8
UPRD402	400	D.E.	2,4	2,1	2,5	0,25	2,8/10		9,8
UPRD252	250	D.E.	2,4	2,1	2,6	0,7	2,8/10	180/390	9,8

To order:

- P/N 915250470 UPRD1002 1000BAR BELL
- P/N 915250410 UPRD702 700BAR BELL
- P/N 915250460 UPRD502 500BAR BELL
- P/N 91520098X UPRD402 400BAR BELL
- P/N 915250450 UPRD252 250BAR BELL



Hydraulic directional valve 4/2 Cetop03 pneumatically operated

Accessories:

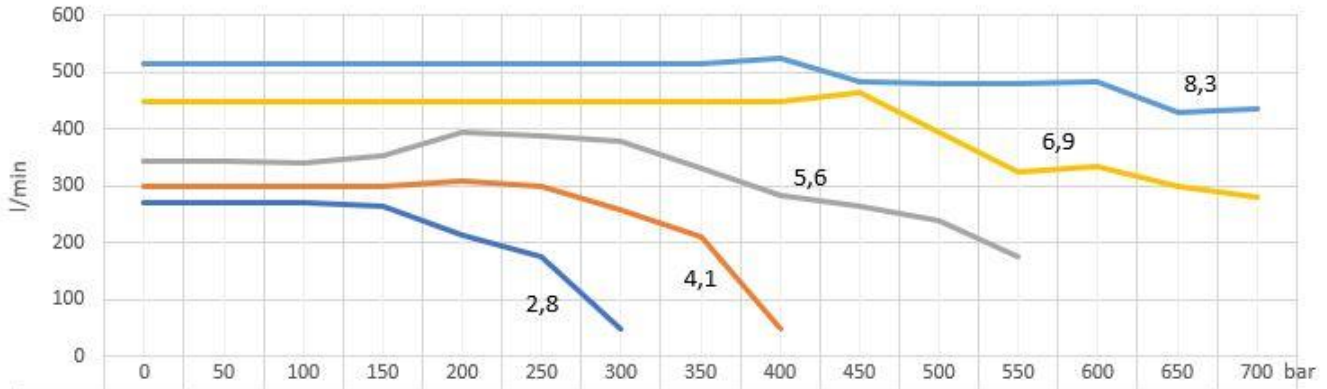
- Oversize oil tanks
- Fixing plates
- Fitting
- Hose flex
- 3 button remote control (advance/release/safety)
- In line hand valve

Spare parts:

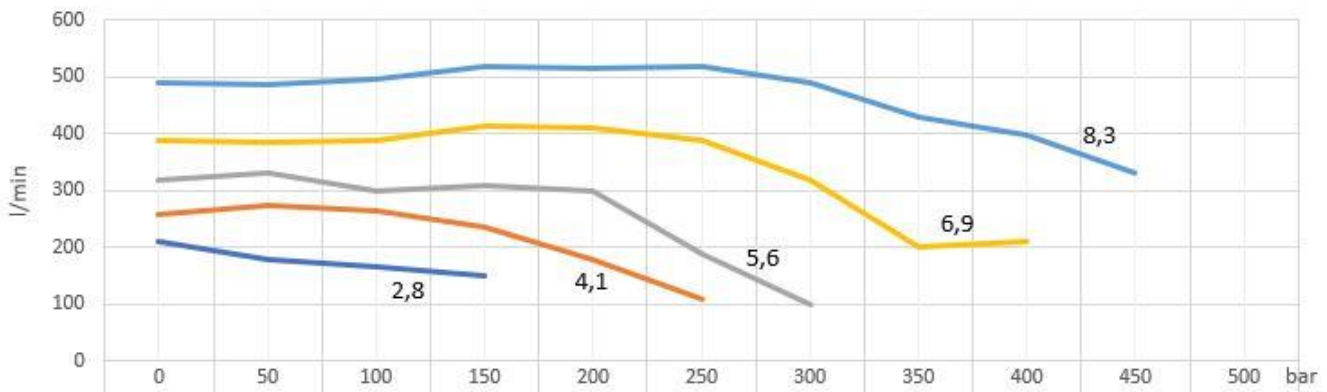
- SEAL KIT UPRD

Diagrammi consumo aria (l/min) - (air consumption):

Air Consume UP700

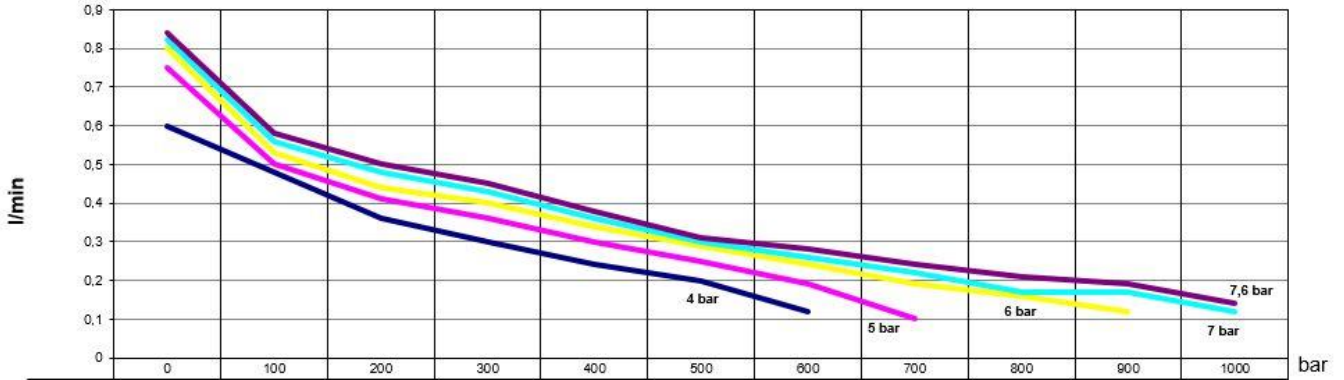


Air Consume UP500

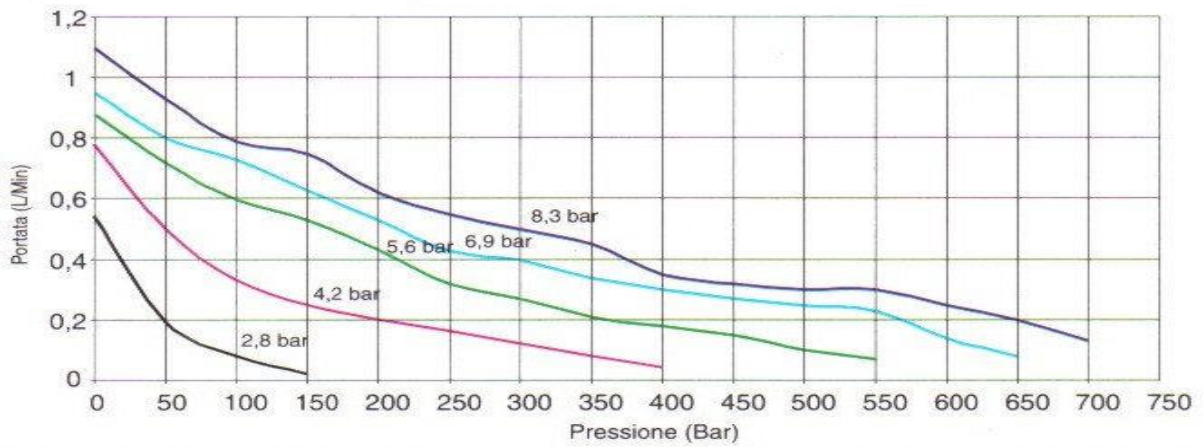


Diagrammi portata (l/min) - (oil flow):

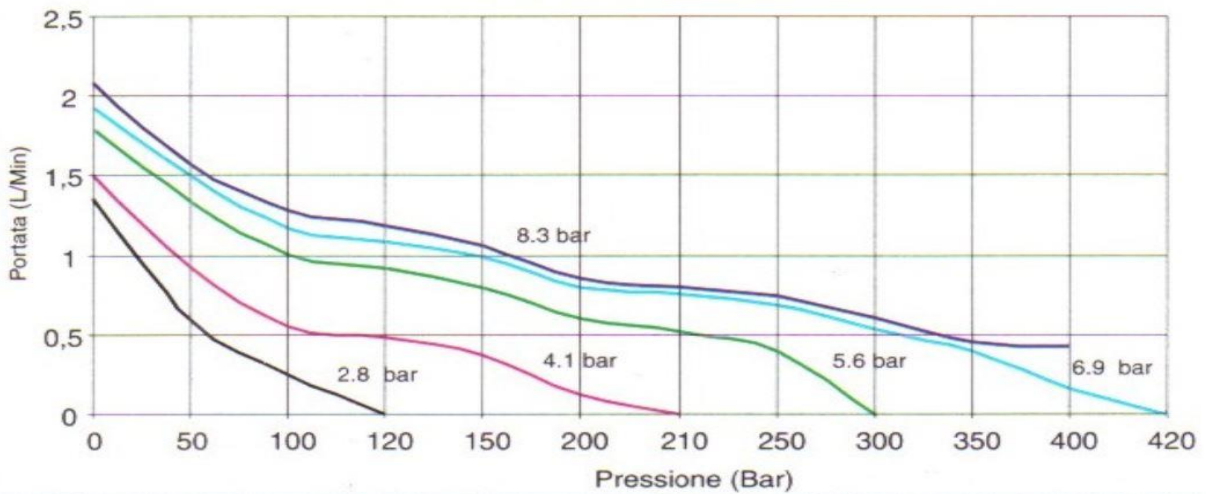
UP1000



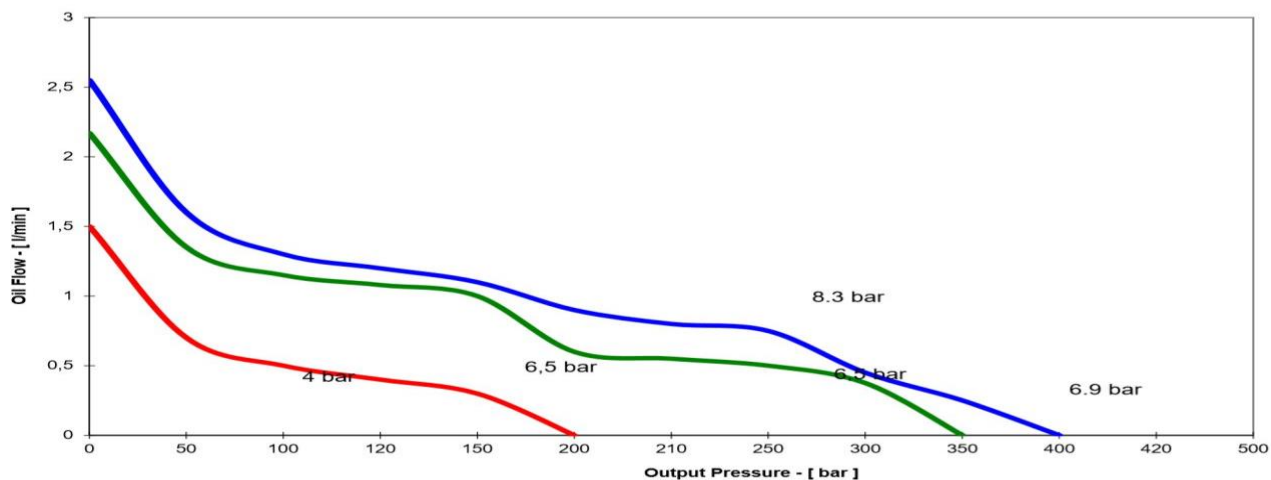
UP700



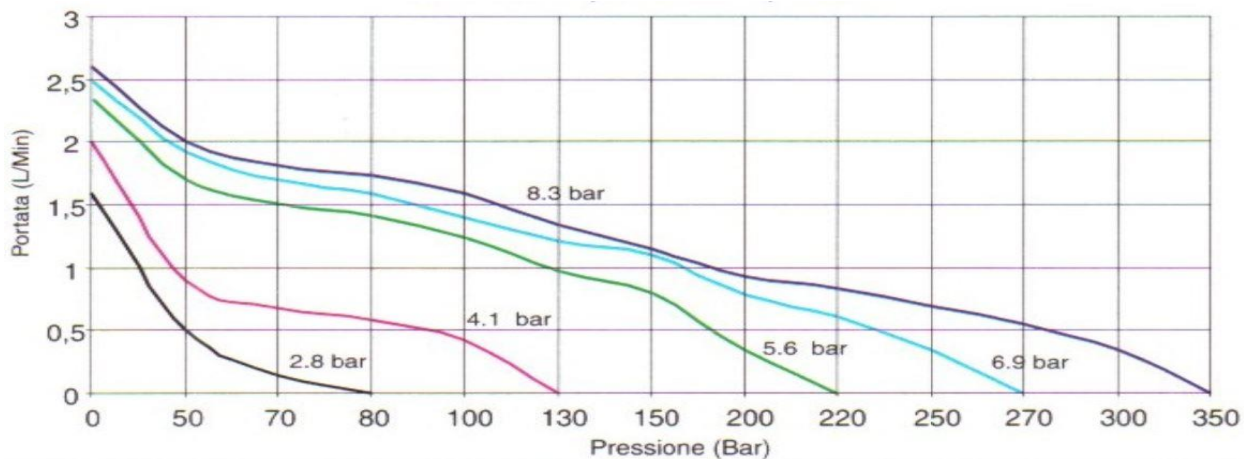
UP500



UP400



UP250



All BELL products are designed and manufactured within BELL SRL in via F. De Pisis, 5 - 42124 Reggio Emilia (RE) - Italy, according to the Quality Standards that distinguish the MADE IN ITALY from the Rest of the World.